

**NORTHWEST
CONSERVATION
DISTRICT**

www.nwcd.org

Cover by Annette Lott

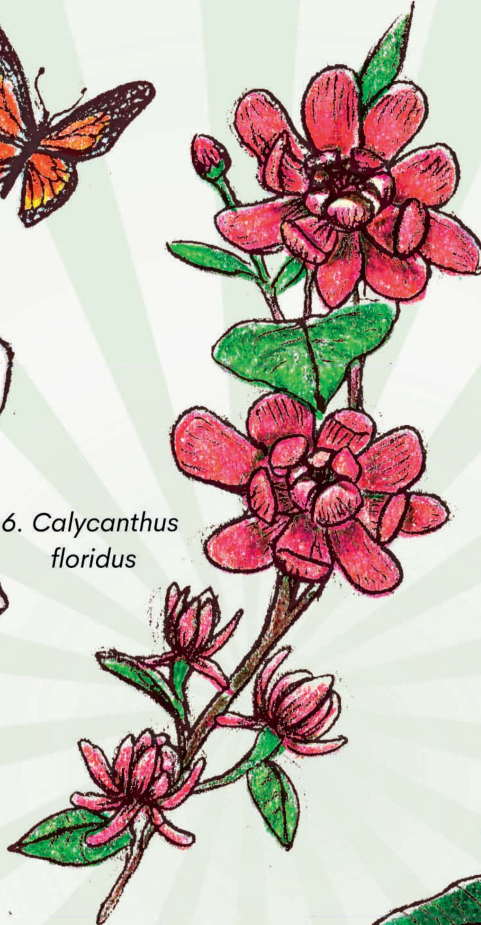
EARTH DAY *Plant Sale*

April 21st - 23rd, 2023

31. *Magnolia virginiana*



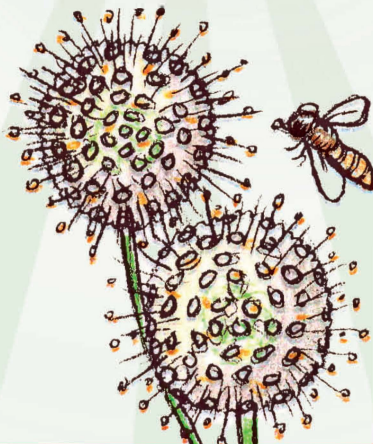
6. *Calycanthus floridus*



8. *Clethra alnifolia*



7. *Cephalanthus occidentalis*



24. *Rhododendron maximum*



20. *Kalmia latifolia*



16. *Hypericum frondosum*



Goshen Fairgrounds
116 Old Middle St

Pre-Order Scheduled Pick Up
nwcd.org/shop Fri- Sun, 9 AM - 4 PM

A GUIDE TO OUR EARTH DAY PLANT SALE

NWCD'S EARTH DAY PLANT SALE: is our annual major fundraising event. All proceeds support conservation, education and technical assistance for our 34 northwestern Connecticut towns. We are grateful for your continued support!

IMPORTANT PRE-ORDER INFORMATION: For our Earth Day Plant Sale, we are continuing a **scheduled PRE-ORDER arrangement**. Orders will be picked up at a designated pick-up time. Time slots are every **30 minutes from 9AM-4PM on Friday April 21st through Sunday April 23rd**. When you send in your order form, please give updated **contact information** - your **phone number** is best for easy communication. A NWCD staff member will be in contact with you to choose a pick-time and address the process for picking up your order.

When you arrive at the barn, it is **required** that you bring the invoice that will be mailed to you (if you provide an email, it will also be emailed to you). Please bring your invoice into the barn, where a volunteer will be available to help you. There will be a selection of **Day-of-Sale** perennials and shrubs. A list of **Day-of-**



Sale perennials will be available on our website a few weeks before the sale. Perennials cannot be pre-ordered.



Pre-Orders **MUST BE IN** by 11:59PM on **Wednesday April 12th**. Due to limited stock, the order deadline will not be extended.

PLANT DESCRIPTIONS - A GUIDE TO CHOOSING YOUR PLANTS:

Our plant sale selections, listed in order by Latin name, include many important native species, but do not include any non-native invasives. Our plant descriptions contain information as to where best to grow

plants: in sun, part shade or shade, USDA Plant Hardiness Zones, mature size and width, and their use as rain garden or pollinator garden plants. Additional information in the body of the text addresses specific attributes such as shape, bloom color and time, and habitat values. Helpful websites for more in-depth information include:



- Lady Bird Johnson's <https://www.wildflower.org/plants-main>
- Native Plant Trust database <https://gobotany.nativeplanttrust.org/>
- Missouri Botanical's Plant Finder <http://www.missouribotanicalgarden.org/plantfinder/plantfindersearch.aspx>

HOW TO TEST YOUR SOIL

The UConn Soil Nutrient Analysis Lab provides soil testing for the home gardener. It's simple and only \$15 for a standard nutrient analysis. The standard nutrient analysis is appropriate for lawns, flowers, vegetables, woody shrubs, fruit trees, agronomic and nursery crops grown in mineral soil.

Visit www.soiltest.uconn.edu, email soiltest@uconn.edu or call 860-486-4274 for information on how to collect and send samples for testing.



Northwest Conservation District info@nwcd.org

41st Annual Earth Day Plant Sale * Order Deadline Wednesday April 12, 2023

Scheduled Pick-up at Goshen Fairgrounds, Friday, Saturday and Sunday, April 21, 22 & 23

Please provide contact information - NWCD Staff will be in touch to sign you up for a pick-up time slot

Name _____ Phone _____

Address _____ Town _____ State _____ Zip _____

Email _____

Mail this order form or place your order online at www.nwcd.org

NATIVE AND ORNAMENTAL SHRUBS

			Gallon size	Price	How many	Total
1	Bottlebrush Buckeye	<i>Aesculus parviflora</i>	3	\$58		
2	Shadblow Serviceberry	<i>Amelanchier canadensis</i> (clump)	3	\$55		
3	Brilliant Red Chokeberry	<i>Aronia arbutifolia</i> 'Brilliantissima'	2	\$35		
4	Viking Black Chokeberry	<i>Aronia melanocarpa</i> 'Viking'	3	\$45		
5	Pinxterbloom Azalea	<i>Rhododendron periclymenoides</i>	2	\$40		
6	Sweet Shrub	<i>Calycanthus floridus</i>	3	\$45		
7	Magical Moonlight Buttonbush	<i>Cephalanthus occidentalis</i> 'Magical Moonlight'	3	\$45		
8	Summersweet	<i>Clethra alnifolia</i>	2	\$35		
9	Purpleleaf Bailey American Hazelnut	<i>Corylus americana</i> 'Purpleleaf Bailey Select'	3	\$60		
10	Gray Dogwood	<i>Cornus racemosa</i>	3	\$45		
11	Cardinal Red Twig Dogwood	<i>Cornus sericea</i> 'Cardinal'	3	\$45		
12	Low Bush Honeysuckle	<i>Diervilla lonicera</i> 'Copper'	2	\$35		
13	Vernal Witch-hazel	<i>Hamamelis vernalis</i>	3	\$40		
14	Pinky Pollen Ring Smooth Hydrangea	<i>Hydrangea arborescens</i> 'Pinky Pollen Ring'	3	\$50		
15	Alice Oakleaf Hydrangea	<i>Hydrangea quercifolia</i> 'Alice'	3	\$50		
16	Sunburst St John's wort	<i>Hypericum frondosum</i> 'Sunburst'	3	\$45		
17	Densa Inkberry	<i>Ilex glabra</i> 'Densa'	2	\$35		
18	Winterberry	<i>Ilex verticillata</i>	2	\$35		
19	Virginia Sweetspire	<i>Itea virginica</i> 'Henry's Garnet'	2	\$35		
20	Keepsake Mountain Laurel	<i>Kalmia latifolia</i> 'Keepsake'	3	\$64		
21	Squirt Coastal Leucothoe	<i>Leucothoe axillaris</i> 'Squirt'	2	\$40		
22	Northern Spicebush	<i>Lindera benzoin</i>	1	\$22		
23	Northern Bayberry	<i>Myrica pensylvanica</i>	3	\$50		
24	Independence Rhododendron	<i>Rhododendron maximum</i> 'Independence'	2	\$45		
25	Pussy Willow	<i>Salix discolor</i>	2	\$30		
26	York Elderberry	<i>Sambucus canadensis</i> 'York'	3	\$40		
27	Double Blue Lilac	<i>Syringa x hyacinthiflora</i> 'Double Blue'	3	\$55		
28	Blue Blaze Arrowwood Viburnum	<i>Viburnum dentatum</i> 'Blue Blaze'	3	\$45		

NATIVE AND ORNAMENTAL TREES			Size/ Count	Price	How many	Total
29	Heritage River Birch (clump)	<i>Betula nigra</i> 'Heritage'	3 gallon	\$68		
30	Spring Fleecing Fringe Tree	<i>Chionanthus virginicus</i> 'Spring Fleecing'	7 gallon	\$125		
31	Sweet Bay Magnolia	<i>Magnolia virginiana</i> 'Moonglow'	3 gallon	\$68		
32	Sourwood Tree	<i>Oxydendrum arboreum</i>	3 gallon	\$68		
33	Red Oak	<i>Quercus rubra</i>	3 gallon	\$68		

HOME GARDEN - FRUITS AND VEGETABLES

34	Pawpaw	<i>Asimina triloba</i> (Set of two pots)	2 quart	\$45		
35	Pink Champagne Currants	<i>Ribes rubrum</i> 'Pink Champagne'	1 plug	\$18		
36	MacDonald Rhubarb	<i>Rheum rhabarbarum</i>	2 bulbs	\$22		
37	Millennium Asparagus	25 bare-root plants	25 rts	\$20		
38	Nova and Joan C Red Raspberries	5 early- and 5 late-season canes	10 cns	\$40		
39	Patriot, Bluecrop & Northland Blueberries	<i>Vaccinium</i> - Set of 3 potted bushes	2 gallon	\$80		
40	Seascape Everbearing Strawberries	25 bare root plants	25 rts	\$15		
41	Crispin® (Matsu) Apple Tree	<i>Malus</i> 'Crispin'	7 gallon	\$80		
42	Macoun Apple Tree	<i>Malus</i> 'Macoun'	7 gallon	\$80		
43	Elberta Peach Tree	<i>Prunus</i> x 'Elberta'	7 gallon	\$80		
44	Red D'Anjou Pear Tree	<i>Pyrus</i> x 'Red D'Anjou'	7 gallon	\$80		

GROUNDCOVERS, VINES, GRASSES AND FERNS

45	Box Huckleberry	<i>Gaylussacia brachycera</i> 'Berried Treasure'	1 gallon	\$20		
46	Ground Hug Chokeberry	<i>Aronia melanocarpa</i> 'Ground Hug'	8"	\$24		
47	Massachusetts Kinnickinnick	<i>Arctostaphylos uva-ursi</i> 'Massachusetts'	1 gallon	\$22		
48	Major Wheeler Honeysuckle	<i>Lonicera sempervirens</i> 'Major Wheeler'	2 gallon	\$35		
49	Yellowroot	<i>Xanthorhiza simplicissima</i>	1 gallon	\$22		
50	Blonde Ambition Blue Grama Grass	<i>Bouteloua gracilis</i> 'Blonde Ambition'	1 gallon	\$16		
51	Standing Ovation Little Bluestem	<i>Schizachyrium scoparium</i> 'Standing Ovation'	2 gallon	\$22		
52	Sweet Fern	<i>Comptonia peregrina</i>	1 gallon	\$20		

IMPORTANT ORDER INFORMATION

The Plant Sale this year is pre-order at designated pick-up times.
Please provide contact information on the front of this order form (A phone number is best).
A NWCD staff member will contact you to sign up for a pick-up time.
Time-slots are every 30 minutes between 9-4PM Friday April 21st to Sunday April 23rd.
When you arrive at the barn, please bring the invoice that will be mailed
(it will be emailed additionally if you provide an email).

Any questions, feel free to call 860-626-7222.

Mail to NWCD
1185 New Litchfield Street
Torrington, CT 06790
Checks to NWCD,
no sales tax

Total

N=Native/Nativar RG=Rain Garden P=Pollinator S=Sun PSh=Part Shade Sh=Shade Z=Zone

NATIVE AND ORNAMENTAL SHRUBS

- 1 Bottlebrush Buckeye** **N, S, PSh, Z5, 8-10' t x 8-10' w**
Shrub form of a vigorous deer-resistant native great for a dappled shade garden. Large, pyramidal white habitat-friendly flower clusters in summer give way to glossy, inedible fruits (buckeyes). Attractive shades of fall color. Prefers, moist, well-drained soils.
- 2 Shadblow Serviceberry** **N, P, S, PSh, Z3, Mature 14-16' t x 6-8' w**
A vigorous multi-stemmed native and true harbinger of spring with snowy white April flowers. Blooms change to small purple-red fruits attractive to birds in early summer. Deep green foliage provides golden yellow to orange fall color giving way to clean, gray, muscular bark that shows well all winter.
- 3 Brilliant Red Chokeberry** **N, RG, P, S, PSh, Z4, Mature 6-8' t x 3-5' w**
A versatile buffer/rain garden nativar that tolerates wet soils and offers dark, shiny foliage with profuse white flowers in May, providing nectar for native bees. Dense bunches of glossy red fruit ripen in summer and persist through the winter, providing food for birds for many of our prized bird species. Bright-red autumn foliage.
- 4 Viking Black Chokeberry** **N, RG, P, S, PSh, Z3, Mature 3-5' t x 4-6' w**
Showy, fragrant mid-May flowers give rise to flattened heads of green fruit that turn black in late summer. Its edible, nutrient-rich fruit provides food for native birds and wildlife, and can used in preserves, jams, fruit drinks and even wine to take full advantage of its great taste and strong health benefits. Deep green foliage turns fiery red as the weather cools. Thrives even in the least fertile, roughest landscape spots.
- 5 Pinxterbloom Azalea** **N, P, S, PSh, Z4, Mature 6-8' t x 6-8' w**
Fragrant, late-April bloom fills the air with its sweet honeysuckle scent. Rounded clusters of pink to white flowers provide a great early-spring nectar source for hummingbirds and butterflies. Prefers well-drained soils in areas of dappled sun or high open shade.
- 6 Sweet Shrub** **N, S, PSh, Z4, Mature 6-9' t x 6-9' w**
An easy-to-grow, trouble-free hardy native shrub perfect for mixed borders. Deliciously fragrant, red-chocolate colored, frilly May flowers with hints of strawberries, bananas and pineapple. Attracts pollinators and butterflies.
- 7 Magical Moonlight Buttonbush** **N, RG, P, S, PSh, Z5, Mature 5-8' t x 4-6' w**
A compact nativar with perfectly round, inch-wide, dove-white fragrant spring flowers that serve as a nectar source for hummingbirds, butterflies, insects and bees. Rich glossy green foliage. Large round summer fruits attract songbirds and spent blooms form into 1" diameter red orbs for fall interest. Likes wet soils - great for rain gardens.
- 8 Summersweet** **N, N, RG, P, PSh, Sh, Z4, Mature 5-7' t x 6-8' w**
Scented, white fluffy, bottle brush-like flowers cover this vase-shaped native providing a valuable summer nectar for native butterflies and bees, and essential shelter for birds. Adapts to moist soils and shade – great for rain gardens or an accent, foundation or shrub border. Glossy green leaves change to attractive yellow fall foliage.
- 9 Purpleleaf Bailey Select American Hazelnut** **N, S, Z4, Mature 7-8' t x 7-8' w**
Beautiful and edible addition to the backyard garden. A deciduous shrub producing edible hazelnuts ready in September for drying, cooking, and eating for months thereafter. Large heart-shaped leaves subtly turn green to burgundy and into an attractive bronze in the fall.
- 10 Gray Dogwood** **N, RG, S, PSh, Z5, Mature 6-8' t x 10-12' w**
A great native pioneer adaptable to difficult spots and tolerant of wet, poor soils. Great in masses, this wide spreader is disease-free, has good red-purple fall color, and tons of white berries in the fall that many birds love.
- 11 Cardinal Red Twig Dogwood** **N, P, S, PSh, Z3, Mature 6-8' t x 9-10' w**
An upright and spreading nativar provides year-round delight. Tiny fragrant white flowers May-July give way to clusters of bluish-white drupes in summer, attractive to birds. Purple-red fall color and stunning red color in winter.
- 12 Low Bush Honeysuckle** **N, P, S, PSh, Z3, Mature 2-3' t x 3-4' w**
Tough and tolerant, this dense compact nativar performs well in dry areas and sun or partial shade. Spring foliage emerges with a colorful blast of coppery-red color. Late spring to early summer, nectar-filled yellow flowers attract native insects. Dry fruit capsules attract birds in the fall and winter. Attractive bronze-red to orange-red fall color.

N=Native/Nativar RG=Rain Garden P=Pollinator S=Sun PSh=Part Shade Sh=Shade Z=Zone

- 13 Vernal Witch-hazel** **N, RG, S, PSh, Z4, Mature 8-10' t x 10-12' w**
Earliest flowering shrub in spring, this tough, adaptable native blooms from January to early April with yellow fragrant flowers followed by fall seed for birds. Large growing and open in habit, it provides nesting sites for many different birds. Excellent fall foliage, great buffer and rain garden plant.
- 14 Pinky Pollen Ring Smooth Hydrangea** **N, P, RG, S, PSh, Z3, Mature 4-5' t x 4-5' w**
This easy-to-grow nativar is a pollinator magnet with clouds of pastel pink, lace-cap flowers appearing on stiff, upright stems, surrounded by bluish-green foliage. Blooms on new wood and is shade tolerant.
- 15 Alice Oakleaf Hydrangea** **N, P, PSh, Z5, Mature 6-8' t x 6-8' w**
An easy-care nativar with huge 14" July flowers with arching cones of white blooms. Disease-resistant foliage turns scarlet and burgundy in fall with rich copper-brown exfoliating bark, all providing shelter for nesting and critter cover.
- 16 Sunburst St John's wort** **N, P, S, PSh, Z5, Mature 3-4' t x 2-3' w**
A small, dense growing nativar with an upright form great for small spaces. Bright, golden-yellow flowers with distinctive puffball stamens appear mid-June and continue to October and stand out against glossy, blue-green foliage.
- 17 Densa Inkberry** **N, RG, P, S, PSh, Z5, Mature 3-4' t x 4-5' w**
This tough, durable broadleaf evergreen is a versatile plant that tolerates many landscape situations, ranging from sandy soils, places prone to exposure to road salt or seaside conditions, riparian buffers and rain gardens. Habitat friendly, it serves as year-round cover and an excellent food source with its black berries for many native birds. Great alternative to boxwood as well as being a native alternative to Japanese Barberry and Privet.
- 18 Winterberry** **N, RG, S, PSh, Sh, Z3, Mature 7-8' t x 7-8' w**
Quintessential native with dark green lustrous foliage, upright rounded form for bird habitat and bright red berries for a fall food source for native birds. Tolerates most sunny or partly shaded spots with moist or wet soils. Great rain garden and riparian buffer plant as well as being a native alternative for many invasive plants, including Burning Bush, Japanese Barberry, Multiflora Rose and Autumn Olive.
- 19 Virginia Sweetspire** **N, RG, P, S, PSh, Z5, Mature 3-4' t x 5-6' w**
This under-used nativar offers dark green, lustrous foliage on a tight, slightly spreading form. Long racemes of white, fragrant, early June flowers attract hummingbirds and butterflies. Tolerates many soils from moist to dry in sun or part shade. Brilliant reddish-purple fall foliage. Great rain garden plant.
- 20 Keepsake Mountain Laurel** **N, S, PSh, Sh, Z4, Mature 4-5' t x 5-6' w**
A Connecticut state flower nativar with shiny deep green foliage, a dense rounded form, and a superb spring flower show that starts deep pink in bud and opens to a pleasing yet strong pink color by early June. Serves as great cover source for woodland birds, and its flowers provide a wealth of nectar for native bees.
- 21 Squirt Coastal Leucothoe** **N, PSh, Sh, Z5, Mature 1-2' t x 2-3' w**
Dense and showy with rich mahogany and copper-toned new growth against glossy, green leaves. Nectar-laden, white, bell-shaped May flowers attract native bees and butterflies. This compact nativar's low, spreading form is perfect for grouping in shaded areas with moist, well-drained soils providing year-long shelter for birds and wildlife.
- 22 Northern Spicebush** **N, RG, P, S, PSh, Z4, Mature 6-10' t x 6-10' w**
Oval, upright native buffer plant with early-April yellow blooms providing early-season nectar to bees and butterflies. Host plant to Spicebush Swallowtail butterfly. Foliage and stems are aromatic when crushed. Fall brings important red berries for birds and showy yellow foliage.
- 23 Northern Bayberry** **N, N, P, S, Z3, Mature 5-6' t x 8-10' w**
A truly talented native that thrives in sun to part shade, dry or moist soils, normal conditions or road salt spray with ease, all while providing cover for birds and a supply of gray, waxy, berries in the fall and winter that birds love.
- 24 Independence Rhododendron** **N, PSh, Sh, Z4, Mature 8-12' t x 8-12' w**
A spectacular nativar offering huge, clear-pink flowers in mid-summer, cover for wildlife and nesting spots for songbirds. Can reach 25-feet with age in the heart of its native habitat. Grown in sun to shade and in moist or dry soils.

- 25 Pussy Willow** **N, P, S, PSh, Z4, Mature 6-15' t x 4-12' w**
A true New England native, big in size and appreciated by birds, butterflies and humans. Late winter catkins provide early-season nectar for native bees, and its buds and leaves are a food source for native birds and butterflies.
- 26 York Elderberry** **N, RG, S, PSh, Z4, Mature 8-10' t x 8-10' w**
A native cultivar with clusters of small, fragrant white flowers in spring followed by large clusters of dark-blue, late-summer fruit that serves as a food source for birds through the fall. Fruit is edible for humans as well.
- 27 Double Blue Lilac** **S, Z2, Mature 6-8' t x 6-8' w**
Color, fragrance, and reliability are what make lilacs such an endearing garden plant, and hyacinthiflora lilacs possess all three. Cool purple blooms take on a blue tone, each one full of double florets for a delicate seashell-like effect. A heavy bloomer with excellent disease resistance in an appealing shape with exceptional fragrance to help create happy memories of spring.
- 28 Blue Blaze Arrowwood Viburnum** **N, P, S, PSh, Z4, Mature 5-6' t x 5-6' w**
A compact nativar with heads of creamy flower in late May and early June providing an outstanding nectar source for native bees and butterflies. Blooms give way to blue-black berry-like drupes attractive to songbirds. Dark-green, lustrous foliage with distinctive deep wine frost undersides turn purple-red in fall.

NATIVE AND ORNAMENTAL TREES

- 29 Heritage River Birch (clump)** **N, RG, S, PSh, Z4, Mature 35-40' t x 30-35' w**
Tawny-white exfoliating bark and yellow fall foliage provide for year-round interest. This multi-stem nativar is disease and insect resistant while providing shelter and nesting for birds. A great specimen tree for a rain garden.
- 30 Spring Fleecing Fringe Tree** **N, P, S, PSh, Z5, Mature 12-18' t x 8-10' w**
Considered one of the most beautiful North American native trees because of its outstanding floral display. Delicate, lightly fragrant, creamy white flowers appear in spring attracting a variety of bees. 'Spring Fleecing' is a male tree, with showier flowers than a female plant but no fall berries. A suitable pollinator for a female tree.
- 31 Sweet Bay Magnolia** **N, PSh, Z4, Mature 8-10' t x 8-10' w**
A vigorous growing, disease-resistant, well-rounded, nativar tree with big, deep-green foliage providing a backdrop to massive, creamy-white, sweetly fragrant flowers that emerge continually from June through summer. Its blooms attract butterflies, and its showy red seeds provide food for birds.
- 32 Sourwood Tree** **N, S, PSh, Z5, Mature 25-30' t x 15 x 20' w**
Deep green, peach-like foliage forms the background for sprays of small, white, lily of the valley-like fragrant flowers on long, terminal, drooping strings in July and August. Its summer show is followed by deep crimson fall foliage. Easy-to-grow with a narrow form perfect for residential landscapes.
- 33 Red Oak** **N, S, Z3, Mature 60-70' t x 60-70' w**
Red Oak, a native, deciduous shade tree of the Northeast, is a dominant, fast growing tree with a round shape. Deep red foliage is exhibited in the fall. A keystone species in particular relating to insects and birds.

LEAVE THE LEAVES

"Besides providing the right plants, and protecting your garden from pesticides, one of the next most valuable things you can do to support pollinators and other invertebrates is to provide them with the winter cover they need in the form of fall leaves and standing dead plant material. Frequently however, this is the hardest pill for gardeners to swallow." ~Justin Wheeler, Xerces Society

Visit <https://xerces.org/blog/leave-the-leaves> to learn more about the benefits of leaving leaves in your backyard in the fall through winter. Both 'Leave the Leaves' and 'No Mow May' are Xerces Society initiatives. Both these programs exemplify that a simple commitment, no matter how much or how little, will make an impact. Whether you leave a section of your yard with leaves or a strip of lawn unmowed, you can make a difference.



FRUIT AND VEGETABLE GARDEN PLANTS

- 34 Pawpaw** **N, P, S, PSh, Z5, Mature 20-25' t x 20-25' w**
A native understory tree with deep brownish-purple flowers from April to May followed by long, tapered green leaves, a food source for the Zebra Swallowtail Caterpillar. Sometimes called "the custard-apple," the pawpaw ranks as the largest indigenous edible fruit in the United States. Deer avoid its leaves and branches, but possums, foxes, squirrels, raccoons, and birds are all known to enjoy pawpaw fruit. Sold in pairs for best results.
- 35 Pink Champagne Currants** **S, Z3, Mature 3-5' t x 3-5' w**
This is the tastiest currant on the market for fresh eating! Pink Champagne currant is a vigorous upright bush, free of leaf diseases, with a beautiful translucent pink fruit. Pink Champagne is easy-to-grow, produces fruit of high quality and good flavor. A cross between white and red currants, high yielding and good for preserves, jams and jellies.
- 36 MacDonald Rhubarb** **S, Z4, Mature 3' t x 3' w**
This rhubarb variety is known for its excellent production for commercial growers and home gardeners. This very vigorous, upright growing strain produces large, tender stalks and has an acceptable red color. Shows resistance to root-rot problems. Rhubarb bears a light harvest in the 2nd year and a full harvest in the 3rd year.
- 37 Millennium Asparagus** **S, Z3, Bundle of 25 one-year-old plants**
Superior all-around performer with high quality spears, tender, and with good flavor. Successful in a wide range of soil types. An asparagus patch is a long term investment that will continue to yield abundantly for 20 years or more if given proper planting and care. Soil testing is encouraged. Plant 18-24" apart.
- 38 Nova and Joan C Red Raspberries** **S, Z4, Five plants will fill a 10-foot row**
This award-winning combo of 5 mid-summer and 5 late-season winter-hardy bushes will extend your eating enjoyment. Nova is highly productive, producing firm bright berries with rich, intense flavor. Joan C is a fall-bearing, high yielding, thornless plant with large, easy-to-pick red berries great for freezing.
- 39 Blueberries** **S, RG, P, Z3-4, Set of three 2-gallon potted bushes**
Patriot - early season, delicately sweet flavored berries. **S, Z4, Mature 4-5' t x 4-5' w**
Bluecrop - mid-season with large sweet-to-tart tasting fruit. **S, Z4, Mature 5-6' t x 5-6' w**
Northland - late season, compact, and high yielding. **S, Z3, Mature 4-5' t x 4-5' w**
Known for their fruit's taste and nutritional value, blueberry bushes are great rain garden plants, a pollinator and food source for many birds and bees and finish with fiery-red fall color. Plants need acidic soils with pH of 4.5 to 4.8.
- 40 Seascape Everbearing Strawberries** **S, Z4, Spread 24" t x 36" w, Fruit late summer / fall**
A highly successful everbearing plant for northeastern growers for summer and fall. Large firm berries considered to have the best flavor of any of the everbearers. Self-pollinating. Planting instructions included.
- 41 Crispin® (Matsu) Apple Tree** **Semi-dwarf, S, Z4, Mature 12-15' t x 12-15' w**
Heavy bearer of late-season, golden-yellow fruit with a complex spicy flavor. This easy-to-grow tree is a cross between a Golden Delicious and a sweet Japanese Indo. Large, juicy round fruit is great to eat fresh and is considered an excellent dessert apple in the culinary world. Best pollinators include Golden Delicious or white flowering crabapples.
- 42 Macoun Apple Tree** **Semi-dwarf, S, Z4, Mature 12-15' t x 12-15' w**
Known for their wine-color with gold accents, aroma and sweet-tart, juicy flavor. Excellent for snacks and desserts, and good for culinary uses. Mid-season bloom and overall highly productive. Ripens in mid-September.
- 43 Elberta Peach Tree** **Semi-dwarf, S, Z5, Mature 10-14' t x 8-12' w**
Produces large, firm free-stone peaches ripening late August. Golden yellow fruit blushed with red. Self-fertile and resistant to brown rot. Ideal for eating, canning and freezing. Spring pink blossoms.
- 44 Red D'Anjou Pear Tree** **Semi-dwarf, S, Z5, Mature 15-18' t x 12-18' w**
A cold-tolerant, vigorous tree producing dark maroon egg-shaped fruit with mild, fine textured, white flesh and a delicate aroma. Great for salads, desserts and fresh eating. Serves as a great pollinator, attracting butterflies and birds.
- 45 Box Huckleberry** **N, P, PSh, Sh, Z5, Mature 1-3' t x 1-3' w**
A habitat-friendly native plant, with white urn-shaped spring flowers followed by drupe-like blue berries, edible to both humans and wildlife. Spreads easily in sun-lit areas. Provides shelter for birds, and is a nectar source for butterflies and native bees. Beautiful orange and crimson fall foliage.

N=Native/Nativar RG=Rain Garden P=Pollinator S=Sun PSh=Part Shade Sh=Shade Z=Zone

GROUNDCOVERS, VINES, GRASSES AND FERNS

- 46 Ground Hug Chokeberry** **N, P, S, PSh, Z3, Mature 8-14" t x 30-36" w**
Tough nativar shrub that naturally grows as a dense groundcover. In spring, dainty white flowers nestle among the glossy green foliage. If left untrimmed, dark purple berries attractive to birds, appear in summer followed by outstanding red foliage. Tolerant of many soil conditions, serves to keep down weeds and stabilizes soil while beautifying difficult areas. Aka UConn UCONNAM012.
- 47 Massachusetts Kinnickinnick** **N, P, S, PSh, Z3, Mature 6-12" t x 4-6' w**
This native cultivar groundcover does best in poor, sandy soil. No more than 12" high, its small, lustrous green foliage hugs its branches, providing wildlife food and shelter. Native bees are attracted to its small, showy pink flowers, and birds, small critters and even bears are attracted to its ample supply of late-summer-to-fall berries.
- 48 Major Wheeler Honeysuckle** **N, P, S, PSh, Z4, Mature 20-30' t x 20-30' w**
Masses of long, tubular, bright-red trumpet flowers provide neighborhood hummingbirds and butterflies a great source of flower fragrance and nectar late May through summer. Dark green, lustrous and mildew-free foliage.
- 49 Yellowroot** **N, P, S, PSh, Z3, Mature 1-3' t x 2-4' w**
A native woody groundcover that easily spreads to form a 1-3' tall dense carpet. Small spring purple flowers produce star-shaped fruits eaten by birds and other small animals. A perfect plant to use as a transition between sun and shade, and wet to dry. Outstanding fall color.
- 50 Blonde Ambition Blue Grama Grass** **N, P, Z4, Mature 30-36" t x 30-36" w**
Great native ornamental grass with a profusion of big, flag-like, chartreuse flowers held horizontally above the leaves. Resilient stems stay upright through the winter. Attracts butterflies and birds, Deer-resistant, extremely cold-hardy and drought-tolerant.
- 51 Standing Ovation Little Bluestem** **N, P, S, Z3, Mature 3-4' t x 12" w**
Bluish-green, upright foliage changes to a display of fiery colored foliage in fall. Its seed heads are prized by native songbirds, and its stems provide winter landscape interest and cover for birds and other native critters. Thrives in poor, dry soil. 'Standing Ovation' is a naturally occurring nativar discovered in Pennsylvania in 2003.
- 52 Sweet Fern** **N, P, S, PSh, Z2, Mature 2-4' t x 3-4' w**
Although considered a colonizing groundcover, Sweet Fern is an upright woody shrub native to all of eastern United States. Great for sandy dry areas, its sweet scented, fern-like green foliage (hence the name), is a habitat garden "star" for its role as a larval host for a wide variety of moths and butterflies.

NO MOW MAY - ENHANCE POLLINATOR PATHWAYS

No Mow May is a conservation initiative first popularized by Plantlife, an organization based in the United Kingdom. The goal of No Mow May is to allow grass to grow unmown for the month of May, creating habitat and forage for early season pollinators. No Mow May has taken off in the United States, and become part of a Xerces Society initiative, BeeCity USA: <https://beecityusa.org/no-mow-may/>.

In the past three years, NWCD has worked with our original partners in Goshen at the Goshen UCC to provide over 150 yards signs (as shown) to those willing to take the challenge. A downloadable sign from the Xerces society is also available here:

<https://www.xerces.org/publications/other/no-mow-may-sign>.

No May May/Bee City town initiatives have also become part of SustainableCT action 3.12 to enhance pollinator pathways:

<https://sustainablect.org/actions-certifications/actions>.

Similar to 'Leave the Leaves', small commitments such leaving an unmown strip or part of your yard untouched can make a difference. Contact us at info@nwcd.org regarding signage or send us photos!



Rain Gardens - A Natural Solution to Stormwater Pollution

Rain gardens are a simple and natural solution for treating polluted stormwater runoff from footing, roof and driveway drains, and from lawns and parking lots in both urban and suburban settings. Runoff directed into a rain garden is slowed down, filtered and cleaned before being released into groundwater, drinking water aquifers and other valuable water resources. Rain gardens work best in well-drained soils and are the most common type of Low Impact Development (LID) system used in both residential and non-residential settings. They can provide an opportunity to add habitat for birds, pollinators and other wildlife year-round by choosing native vegetation that tolerates both wet and dry soils.

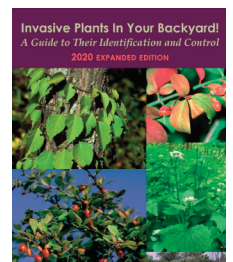
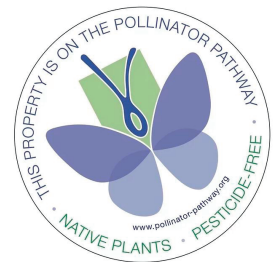
In recent years, NWCD has partnered with many of our 34 towns to construct rain garden projects to not only provide solutions to stormwater pollution but help educate the public on their value in all landscapes. Our projects can be found at the Mitchell Elementary School in Woodbury, the Booth Free School in Roxbury, the Steele River Greenway in Watertown, Bennett Memorial Park in Bethel and the Bethlehem Town Hall. Construction is underway for two rain gardens in the dog park at Meckauer Park in Bethel. This project will treat runoff from the dog park, two adjacent buildings and the parking lot all located close to the Limekiln Brook.

If you are considering a rain garden in your backyard, you can find information regarding sizing, siting, design, installation, maintenance and cost, by visiting nemo.uconn.edu/raingardens/.



In honor of Earth Day, please join us on NWCD / Partner initiatives

- **National Audubon's** mission to protect birds and bring birds to your home by growing native plants in your backyard. Visit <https://www.audubon.org/PLANTSFORBIRDS>
- **Pollinator Pathway Northeast's** mission to establish pollinator friendly habitats in backyards is a grassroots movement focused on establishing pollinator-friendly habitat and food sources for bees, butterflies, hummingbirds and other pollinating insects and wildlife along a series of continuous corridors. To register your garden, visit <https://www.pollinator-pathway.org/>
- **HomeGrown National Park®** is a call-to-action for a collective effort of individual homeowners, property owners, land managers, farmers, and anyone with some soil to plant in...to start a new HABITAT by planting native plants and removing most invasive plants. Co-founder Doug Tallamy's message is a SOLUTION BASED ACTION - small efforts by many people. To join and learn how to be part of the solution, visit <https://homegrownnationalpark.org/>
- **White Memorial Conservation Center** in Litchfield CT, where 'everyday is Earth Day'! To learn more about their events and to explore their Environmental Education Center and Nature Museum located in the heart of the 4,000 acre White Memorial Foundation, visit <https://whitememorialcc.org/calendar/>
- **Woodbury Earth Day Festival** is scheduled for Saturday April 29, 2023 - Organized by the Pomperaug River Watershed Coalition, this family-friendly event encourages people to adopt earth-friendly practices. Visit <https://www.woodburyearthday.org/programs>
- **Removing Invasives from your Backyard - Consider alternatives linked below:**
 - * www.ct.gov/deep/invasivespecies_cipwg.uconn.edu/invasive_plant_list
 - * www.conservect.org/wp-content/uploads/2020/10/Invasives_guide_2020_web.pdf



The Northwest Conservation District
1185 New Litchfield St.
Torrington, CT 06790
Phone (860) 626-7222
www.nwcd.org



The Northwest Conservation District (NWCD) is a local environmental non-profit 501c(3) organization, serving the towns of Barkhamsted, Bethel, Bethlehem, Bridgewater, Brookfield, Canaan (Falls Village), Colebrook, Cornwall, Danbury, Goshen, Hartland, Harwinton, Kent, Litchfield, Morris, New Fairfield, New Hartford, New Milford, Newtown, Norfolk, North Canaan, Plymouth, Roxbury, Salisbury, Sharon, Sherman, Southbury, Thomaston, Torrington, Warren, Washington, Watertown, Winchester and Woodbury.

Board of Directors:

Larry Rousseau, Torrington, Chairman
Ray Furse, Warren, Vice Chair
Sharon Tingley, Sharon, Secretary
Doreen Lynch-Sudol, Morris, Treasurer
Leya Edison, Goshen
Tara Jo Holmberg, Winsted
Dan McGuinness, Torrington
Michael Sconyers, Norfolk
Rusty Warner, New Hartford
Marissa Wright, Goshen

District Staff:

Cynthia Rabinowitz, *Executive Director*
Karen Griswold Nelson, *Programs*
Kelsey Sudol, *Natural Resource Specialist*
Annette Lott, *Agricultural Technician*
Kathy Castagnetta, *Conservation Specialist*

NWCD 2023 Scholarship Applications due March 31, 2023

NWCD is happy to announce we are accepting applications for our 2023 Scholarships for graduating seniors from six select High Schools in our district. To learn more and apply, visit nwcd.org/scholarships

- **Jacolyn "Jackie" Mott Scholarship** - Northwestern Regional High School or Wamogo High School
- **Dick Leavenworth Scholarship** - Nonnewaug High School or Shepaug High School
- **Reverend Ledlie Laughlin Jr. Scholarship** - Housatonic Valley High School or Marvelwood School



Eligibility:

- Intending to pursue agriculture, environmental sciences or natural resources as a major
- Plan to attend a two or four-year college in fall 2023

NWCD is participating in **Give Local**, an online 36-hour give-a-thon on givelocalccf.org, hosted by the **Connecticut Community Foundation (CCF)**. This year, donations to NWCD will benefit our Scholarship initiative. All donations via **Give Local** will be boosted by bonus funds from the **Connecticut Community Foundation** and their sponsors.



Northwest Conservation District
1185 New Litchfield Street
Torrington, CT 06790

NONPROFIT ORG
U.S. POSTAGE
PAID
WINSTED, CT
PERMIT No. 11



Earth Day Plant Sale Order Form inside

Order by mail or visit our online store at nwcd.org

GO GREEN! For ONLY electronic communications,
request at info@nwcd.org.

POSTAL CUSTOMER

2023 SPRING CONSERVATION CALENDAR

March

- 22 World Water Day, ourwaterct.org
- 23 Designing with Plenty for Pollinators, 7-8PM, to learn more nwcd.org/events
- 31 NWCD Scholarship application deadline, nwcd.org/scholarships

April

- 12 Plant Order Deadline for our 41st NWCD EARTH DAY PLANT SALE
- 15 10 Minutes to Save the Planet, Goshen Public Library, 1PM, sponsored by CT DEEP and CT State Parks, program best suited for ages 10 and up
- 21-23 NWCD EARTH DAY PLANT SALE PICK-UP, Goshen Fairgrounds, 116 Old Middle St., Route 63, Goshen, Order Form inside or order online at nwcd.org
- 22 Earth Day 2023, Theme - 'Invest in our Planet'
- 25-26 Give Local, Greater Waterbury & Litchfield Hills - donate to NWCD or many other amazing non-profits at www.givelocalccf.org
- 27 Introduction to Backyard Composting, 5-630PM, Beardsley Memorial Library, Winsted, learn more and register nwcd.org/events



*Follow NWCD on Instagram and YouTube
@northwestconservationdistrict
and on facebook.com/nwcd.org*