

Northwest Conservation District
40th Earth Day Plant Sale
Pre-Order Scheduled Pick-up
Goshen Fairgrounds,
116 Old Middle Street
April 22, 23 & 24, 2022,
Friday - Sunday, 8AM - 4PM



“Never doubt that a small group of thoughtfully committed citizens can change the world. Indeed, it’s the only thing that ever has.”
~ Margaret Mead, original Earth Day supporter



A GUIDE TO OUR EARTH DAY PLANT SALE

NWCD'S EARTH DAY PLANT SALE: is our annual major fundraising event. All proceeds support conservation, education and technical assistance to our 34 northwestern Connecticut towns. We are grateful for your continued support.

IMPORTANT PRE-ORDER INFORMATION: Our Earth Day Plant Sale looks a little different again this year. In order to be as safe as possible, we are continuing with a modified **PRE-ORDER arrangement**. Orders will be picked up at a designated pick-up time. Time slots are every **30 minutes from 8AM-4PM on Friday April 22nd through Sunday April 24th**. When you send in your order form, please give updated **contact information** - your **phone number** is best for easy communication. A NWCD staff member will be in contact with you to choose a pick-time and address the process for picking up your order.



When you arrive at the barn, it is **required** that you bring the invoice that will be

mailed to you (if you provide an email, it will also be emailed to you). Volunteers

will be available to direct you to your order. You are welcome to load your car but volunteers will be available to help you. We truly appreciate your cooperation during these unprecedented times.



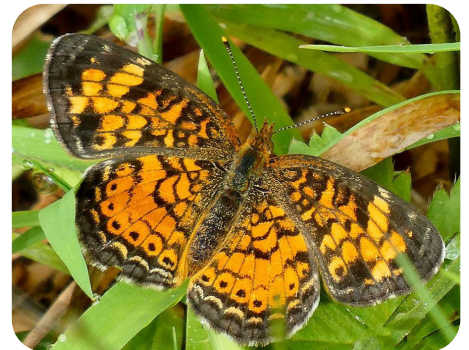
Pre-Orders **MUST BE IN** by **Wednesday April 13th**. Due to limited stock, the order deadline will not be extended.

IMPORTANT PRICING INFORMATION:

Due to world circumstances causing increased plant costs, you will see many plant price increases this year. Thank you for your understanding and continued support of our annual fundraiser.

PLANT DESCRIPTIONS - A GUIDE TO CHOOSING YOUR PLANTS:

Our plant sale selections, listed in order by Latin name, include many important native species, but does not include any non-native invasives. Our plant descriptions contain information as to where best to grow plants, in sun, part shade or shade, USDA Gardening Zones, mature size and width, and their use as rain garden or pollinator garden plants. Additional information in the body of the text addresses specific attributes such as shape, bloom color and time, and habitat values. Helpful websites for more in-depth information and identification include Missouri Botanical's Plant Finder at www.missouribotanical-garden.org/plant_finder, Native Plant Trust <https://gobotany.nativeplant-trust.org/>, "GoBotany" database, and Lady Bird Johnson's <https://www.wildflower.org/plants-main>.



HOW TO TEST YOUR SOIL

The UConn Soil Nutrient Analysis Lab provides soil testing for the home gardener. It's simple and only \$12 for a standard nutrient analysis. The standard nutrient analysis is appropriate for lawns, flowers, vegetables, woody shrubs, fruit trees, agronomic and nursery crops grown in mineral soil.

Visit www.soiltest.uconn.edu, fax: 860-486-4562, email soiltest@uconn.edu or call 860-486-4274 for information on how to collect and send samples for testing.

Northwest Conservation District info@nwcd.org

40th Annual Earth Day Plant Sale * Order Deadline Wednesday April 13, 2022

Scheduled Pick-up at Goshen Fairgrounds, Friday, Saturday and Sunday, April 22, 23 & 24

Please provide contact information - NWCD Staff will be in touch to sign you up for a pick-up time slot

Name _____ Phone _____

Address _____ Town _____ State _____ Zip _____

Email _____

Mail this order form or place your order online at www.nwcd.org

NATIVE AND ORNAMENTAL SHRUBS AND VINES

			Gallon size	Price	How many	Total
1	Sweet Emotion Abelia	<i>Abelia mosanensis</i> 'Sweet Emotion'	3	\$55		
2	Regent Serviceberry	<i>Amelanchier alnifolia</i> 'Regent'	3	\$48		
3	Briliant Red Chokeberry	<i>Aronia arbutifolia</i> 'Brilliantissima'	2	\$35		
4	Iroquois Beauty Black Chokeberry	<i>Aronia melanocarpa</i> 'Iroquois Beauty'	3	\$45		
5	Dutchman's Pipe	<i>Aristolochia macrophylla</i>	1	\$25		
6	Trumpet Vine	<i>Campsis radicans</i>	2	\$35		
7	Beyond Midnight Bluebeard	<i>Caryopteris x clandonensis</i> 'Beyond Midnight'	2	\$35		
8	New Jersey Tea	<i>Ceanothus americanus</i>	2	\$35		
9	Hummingbird Summersweet	<i>Clethra alnifolia</i> 'Hummingbird'	2	\$35		
10	Red Moon Rising Buttonbush	<i>Cephalanthus occidentalis</i> 'Red Moon Rising'	3	\$45		
11	Silky Dogwood	<i>Cornus amomum</i>	3	\$45		
12	Ru-bee Wren Low Bush Honeysuckle	<i>Diervilla lonicera</i> 'Ru-bee Wren'	3	\$45		
13	Common Witch-hazel	<i>Hamamelis virginiana</i>	3	\$45		
14	Pinky Pollen Ring Smooth Hydrangea	<i>Hydrangea arborescens</i> 'Pinky Pollen Ring'	3	\$55		
15	Haas' Halo Smooth Hydrangea	<i>Hydrangea arborescens</i> 'Haas' Halo'	3	\$55		
16	Alice Oakleaf Hydrangea	<i>Hydrangea quercifolia</i> 'Alice'	3	\$55		
17	Sunburst St John's wort	<i>Hypericum frondosum</i> 'Sunburst'	3	\$45		
18	Densa Inkberry	<i>Ilex glabra</i> 'Densa'	2	\$35		
19	Winter Red Winterberry	<i>Ilex verticillata</i> 'Winter Red'	3	\$45		
20	Keepsake Mountain Laurel	<i>Kalmia latifolia</i> 'Keepsake'	3	\$62		
21	Coastal Leucothoe	<i>Leucothoe axillaris</i>	3	\$48		
22	Major Wheeler Honeysuckle	<i>Lonicera sempervirens</i> 'Major Wheeler'	2	\$35		
23	Independence Rhododendron	<i>Rhododendron maximum</i> 'Independence'	2	\$45		
24	Pussy Willow	<i>Salix discolor</i>	3	\$40		
25	York Elderberry	<i>Sambucus canadensis</i> 'York'	3	\$40		
26	Double Blue Lilac	<i>Syringa x hyacinthiflora</i> 'Double Blue'	3	\$55		
27	White Meadowsweet	<i>Spiraea alba var. latifolia</i>	3	\$45		
28	Nannyberry Viburnum	<i>Viburnum lentago</i>	3	\$45		

NATIVE AND ORNAMENTAL TREES				Size/ Count	Price	How many	Total
29	Heritage River Birch (clump)	<i>Betula nigra</i> 'Heritage'	3 gallon	\$68			
30	Eastern Redbud	<i>Cercis canadensis</i>	7 gallon	\$125			
31	Spring Fleecing Fringe Tree	<i>Chionanthis virginicus</i> 'Spring Fleecing'	7 gallon	\$125			
32	Pagoda Dogwood	<i>Cornus alternifolia</i>	3 gallon	\$68			
33	Tulip Tree	<i>Liriodendron tulipifera</i>	3 gallon	\$68			
34	Red Oak	<i>Quercus rubra</i>	3 gallon	\$68			
HOME GARDEN - FRUITS AND VEGETABLES							
35	Pawpaw	<i>Asimina triloba</i> (Set of two pots)	2 quart	\$45			
36	Pink Champagne Currants	<i>Ribes rubrum</i> 'Pink Champagne'	1 plug	\$18			
37	MacDonald Rhubarb	<i>Rheum rhabarbarum</i>	2 bulbs	\$20			
38	Millennium Asparagus	25 bare-root plants	25 rts	\$20			
39	Nova and Joan C Red Raspberries	5 early- and 5 late-season cances	10 cns	\$35			
40	Bluecrop, Blue Jay & Chandler Blueberries	<i>Vaccinium</i> - Set of 3 potted bushes	2 gallon	\$80			
41	Seascape Strawberries	25 bare root plants	25 rts	\$15			
42	Pink Lady Apple Tree	<i>Malus</i> x 'Pink Lady'	5 gallon	\$75			
43	Winesap Apple Tree	<i>Malus</i> x 'Winesap'	5 gallon	\$75			
44	Glohaven Peach Tree	<i>Prunus</i> x 'Glohaven'	5 gallon	\$75			
45	Bosc Pear Tree	<i>Pyrus persica</i> x 'Bosc'	7 gallon	\$80			
GROUNDCOVERS, GRASSES AND FERNS							
46	Ground Hug Chokeberry	<i>Aronia melanocarpa</i> 'Ground Hug'	1 gallon	\$24			
47	Massachusetts Kinnickinnick	<i>Arctostaphylos uva-ursi</i> 'Massachusetts'	1 gallon	\$20			
48	Barren Strawberry	<i>Geum fragaroides</i>	1 gallon	\$14			
49	Yellowroot	<i>Xanthorhiza simplicissima</i>	1 gallon	\$22			
50	Blonde Ambition Blue Grama Grass	<i>Bouteloua gracilis</i> 'Blonde Ambition'	1 gallon	\$16			
51	Standing Ovation Little Bluestem	<i>Schizachyrium scoparium</i> 'Standing Ovation'	2 gallon	\$22			
52	Sweet Fern	<i>Comptonia peregrina</i>	1 gallon	\$22			
IMPORTANT ORDER INFORMATION							Total
<p>The Plant Sale this year is pre-order only at designated pick-up times. Please provide contact information on the front of this order form (A phone number is best). A NWCD staff member will contact you to sign up for a pick-up time. Time-slots are every 30 minutes between 8-4PM Friday April 22nd to Sunday April 24th. When you arrive at the barn, please bring the invoice that will be mailed (it will be emailed additionally if you provide an email).</p> <p>Any questions, feel free to call 860-626-7222.</p>				<p>Mail to NWCD 1185 New Litchfield Street Torrington, CT 06790 Checks to NWCD, no sales tax</p>			

N=Native/nativar RG=Rain garden P=Pollinator S=Sun PSh=Part Shade Sh=Shade Z=Zone

NATIVE AND ORNAMENTAL SHRUBS AND VINES

- 1 Sweet Emotion Abelia** P, S, PSh, Z4, Mature 5-8' t x 5-6' w
Winter hardy to Zone 4, this **Proven Winner** shrub emerges in spring with white and pink jasmine-scented blooms, followed by striking seed heads and orange fall foliage. Attractive to butterflies and pollinators, low maintenance and deer resistant.
- 2 Regent Serviceberry** N, P, S, PSh, Z2, Mature 4-6' t x 4-6' w
A compact, early-flowering Serviceberry with April frothy, 5-petaled, white flowers in showy clusters before the foliage appears. Flowers are attractive to pollinators. Edible berries, resembling blueberries in size and color, appear in June and serve as a food source for birds. Golden autumn foliage.
- 3 Brilliant Red Chokeberry** N, RG, P, S, PSh, Z4, Mature 6-8' t x 3-5' w
A versatile buffer/rain garden nativar that tolerates wet soils and offers dark, shiny foliage with profuse white flowers in May, providing nectar for native bees. Dense bunches of glossy red fruit ripen in summer and persist through the winter, providing food for birds for many of our prized bird species. Bright-red autumn foliage.
- 4 Iroquois Beauty Black Chokeberry** N, RG, P, S, PSh, Z3, Mature 2-3' t x 3-4' w
Showy fragrant May blooms, attractive to pollinators, are followed by dark purple/black berries enjoyed by birds and humans. Multi-stemmed and compact, this easy-to-grow nativar provides deep-red fall color and is deer resistant.
- 5 Dutchman's Pipe** N, P, S, PSh, Sh, Z4, Can grow 15-20' in a season
Named for its flowers' resemblance to Dutch smoking pipes, this old-fashioned native vine is grown for its large heart-shaped, glossy green leaves and rapid growth. It is a larval host plant for the Pipevine Swallowtail butterfly, thriving in moist well-drained soils in full sun to part shade.
- 6 Trumpet Vine** N, P, S, Z4, Mature 20-30' t x 20-30' w
An easy-to-grow native vine providing an abundance of reddish-orange flowers that attract hummingbirds and supply food for a variety of native bees and insects. Its big expansive, thick growth provides cover and essential nesting areas for a many native songbirds. A larval host for the Trumpet Vine Sphinx Moth.
- 7 Beyond Midnight Bluebeard** P, S, Z5, Mature 2-3' t x 2-3' w
Deep-blue flowers in late summer/early fall provide late season color and nectar sources for bees, butterflies and hummingbirds. Mounding and compact with aromatic, dark, glossy green leaves. Prefers well-drained soil and full sun. Deer and rabbit resistant.
- 8 New Jersey Tea** N, P, S, PSh, Z4, Mature 3-4' t x 3-4' w
A historic native garden favorite with white flower clusters in late May filling the garden with a sweet fragrance, attracting butterflies and hummingbirds and serving as a food source for birds. Easy-to-grow and drought resistant.
- 9 Hummingbird Summersweet** N, RG, P, PSh, Sh, Z4, Mature 2-4' t x 3-5' w
A shade-loving, dense nativar perfect for woodland gardens. Fragrant white flower spikes in late summer attract native bees, hummingbirds and butterflies. Lustrous deep green foliage and yellow fall foliage.
- 10 Red Moon Rising Buttonbush** N, RG, P, S, PSh, Z5, Mature 6-10' t x 6-10' w
A habitat-friendly nativar with perfectly round, inch-wide, dove-white spring flowers that serve as a nectar source for hummingbirds, butterflies, insects and bees. Rich glossy green foliage. Large round summer fruits attract songbirds and spent blooms form into 1" diameter red balls for fall interest. Likes wet soils - great for rain gardens.
- 11 Silky Dogwood** N, RG, S, PSh, Z4, Mature 6-10' t x 6-10' w
A native landscape buffer plant with late spring to early summer white blooms attracting butterflies, honeybees and a host of other beneficial insects. High fat content, porcelain blue berries ripen in late summer and attract over 45 different kinds of game and songbirds. Red fall foliage against red-brown stems.
- 12 Ru-bee Wren Low Bush Honeysuckle** N, P, S, PSh, Z4, Mature 2-3' t x 3-4' w
Tough and drought tolerant, this dense, spreading nativar performs well in sun or partial shade. Showy, crimson foliage emerges in spring followed by nectar-filled yellow flowers that attract hummingbirds and support bees in late June. Its glowing orange fall foliage with songbird sustaining fruit in fall makes it an eco-friendly alternative to Burning Bush.

N=Native/nativar RG=Rain garden P=Pollinator S=Sun PSh=Part Shade Sh=Shade Z=Zone

- 13 Common Witch-hazel** N, P, RG, S, PSh, Z3, Mature 8-12' t x 6-10' w
A small native tree or large shrub with yellow, fragrant flowers blooms from October through December. Attractive foliage in all growing seasons. Large, bluish-green bronze-tinged spring foliage changes to thick, green summer foliage providing covered protection for numerous bird species followed by yellow to yellowish-orange colors in fall.
- 14 Pinky Pollen Ring Smooth Hydrangea** N, P, RG S, PSh, Z3, Mature 4-5' t x 4-5' w
This easy-to-grow nativar is a pollinator magnet with clouds of pastel pink, lace-cap flowers appearing in on stiff, upright stems, surrounded by bluish-green foliage. Blooms on new wood and is shade tolerant.
- 15 Haas' Halo Smooth Hydrangea** N, P S, PSh, Z3, Mature 3-5' t x 3-5' w
An easy-to-grow, lace-cap selection offering 14" plus white blooms against thick-bluish green foliage. A host and nectar source for the Hydrangea Sphinx Moth, this drought resistant nativar is perfect for a shady border garden.
- 16 Alice Oakleaf Hydrangea** N, P, PSh, Z5, Mature 6-8' t x 6-8' w
An easy-care nativar with huge 14" July flowers with arching cones of white blooms. Disease-resistant foliage turns scarlet and burgundy in fall with rich copper-brown exfoliating bark, all providing shelter for nesting and critter cover.
- 17 Sunburst St John's wort** N, P, S, PSh, Z5, Mature 3-4' t x 2-3' w
A small, dense growing nativar with an upright form great for small spaces. Bright, golden-yellow flowers with distinctive puffball stamens appear mid-June and continue to October and stand out against glossy, blue-green foliage.
- 18 Densa Inkberry** N, RG, P, S, PSh, Z5, Mature 3-4' t x 4-5' w
This tough, durable broadleaf evergreen is a versatile plant that tolerates many landscape situations, ranging from sandy soils, places prone to exposure to road salt or seaside conditions, riparian buffers and rain gardens. Habitat friendly, it serves as year-round cover and an excellent food source with its black berries for many native birds. Great alternative to boxwood as well as being an invasive alternative to Japanese Barberry and Privet.
- 19 Winter Red Winterberry** N, RG, S, PSh, Sh, Z3, 8-10' t x 8-10' w
This easy-care, dense, multi-stem nativar with deep green foliage produces a bumper crop of cherry red berries that attract birds from fall to winter. Great choice for landscape borders and rain gardens.
- 20 Keepsake Mountain Laurel** N, S, PSh, Sh, Z4, Mature 4-5' t x 5-6' w
A Connecticut state flower nativar with shiny deep green foliage, a dense, rounded form, and a superb spring flower show that starts deep pink in bud and opens to a pleasing yet strong pink color by early June. Serves as great cover source for woodland birds and its flowers provide a wealth of nectar for native bees.
- 21 Coastal Leucothoe** N, P, S, PSh, Sh, Z5/6, Mature 3-6' t x 3-6' w
Dense and showy with rich mahogany and copper-toned new growth against glossy, green leaves. Nectar laden, white, bell-shaped May flowers attract native bees and butterflies. This compact nativar's low, spreading form is perfect for grouping in shaded areas with moist well-drained soils and provides shelter for birds and other wildlife.
- 22 Major Wheeler Honeysuckle** N, P, S, PSh, Z4, Mature 20-30' t x 20-30' w
Masses of long, tubular, bright-red trumpet flowers provide neighborhood hummingbirds and butterflies a great source of flower fragrance and nectar late May through summer. Dark green, lustrous and mildew-free foliage. Non-aggressive and non-invasive, this twining trumpet nativar is an **Invasive Alternative** for Oriental Bittersweet.
- 23 Independence Rhododendron** N, PSh, Sh, Z4, Mature 8-12' t x 8 -12' w
A spectacular nativar offering huge, clear-pink flowers in mid-summer, cover for wildlife and nesting spots for song birds. Can reach 25-feet with age in the heart of its native habitat. Grown in sun to shade and in moist or dry soils.
- 24 Pussy Willow** N, P, S, PSh, Z4, Mature 6-15' t x 4-12' w
A true New England native, big in size and appreciated by birds, butterflies and humans. Late winter catkins provide early-season nectar for native bees, and its buds and leaves are a food source for native birds and butterflies.
- 25 York Elderberry** N, RG, S, PSh, Z4, Mature 8-10' t x 8-10' w
A native cultivar with clusters of small, fragrant white flowers in spring followed by large clusters of dark-blue, late-summer fruit that serves as a food source for birds through the fall. Fruit is edible for humans as well.

N=Native/nativar RG=Rain garden P=Pollinator S=Sun PSh=Part Shade Sh=Shade Z=Zone

- 26 Double Blue Lilac** S, Z2, Mature 6-8' t x 6-8' w
Color, fragrance, and reliability are what make lilacs such an endearing garden plant and hyacinthiflora lilacs possess all three. Cool purple blooms take on a blue tone, each one full of double florets for a delicate seashell-like effect. A heavy bloomer with excellent disease resistance in an appealing shape with exceptional fragrance to help create happy memories of spring.
- 27 White Meadowsweet** N, P, RG, S, Z3, Mature 3-4' t x 3-4' w
A multi-use habitat-friendly native that sweetens meadow landscapes in mid-summer with cone-shaped spires of tiny pinkish-white flowers attractive to butterflies. Fruits appear in fall dispensing seeds attractive to birds. Deer resistant, ideal for rain gardens and cottage gardens. A larval host for the Spring Azure Butterfly.
- 28 Nannyberry Viburnum** N, P, S, PSh, Z2, Mature 12-16' t x 8-12' w
A hardy, easy-to-grow native with non-fragrant, white, flat-topped spring flowers that attract butterflies and other pollinators. Flowers give way in autumn to blue-black, berry-like drupes attractive to songbirds and wildlife. Leathery, deep-green foliage and showy, reddish fall foliage.

NATIVE AND ORNAMENTAL TREES

- 29 Heritage River Birch (clump)** N, RG, S, PSh, Z4, Mature 35-40' t x 30-35' w
Tawny-white exfoliating bark and yellow fall foliage provide for year-round interest. This multi-stem native cultivar is disease and insect resistant while providing shelter and nesting for birds. A great specimen tree for a rain garden.
- 30 Eastern Redbud** N, P, S, Z4, Mature 8-10' t x 10-12' w
This easy-grow native offers big heart-shaped leaves and one-of-a-kind reddish-purple spring bloom. Its dense rounded form provides shelter and nesting for birds and foliage for caterpillar food.
- 31 Spring Fleecing Fringe Tree** N, P, S, PSh, Z5, Mature 12-18' t x 8-10' w
Considered one of the most beautiful North American native trees because of its outstanding floral display. Delicate, lightly fragrant, creamy white flowers appear in spring attracting a variety of bees. 'Spring Fleecing' is a male tree, with showier flowers than a female plant but no fall berries. A suitable pollinator for a female tree.
- 32 Pagoda Dogwood** N, PSh, Z4, Mature 8-10' t x 8-10' w
A native, small understory tree best in moist organic soils in light shade. Fragrant, late-spring white blossoms attract native insects and butterflies, and birds and critters relish late summer berries. Yellow to purple-red fall foliage.
- 33 Tulip Tree** N, P, S, Z4, Mature 60-90' t x 30-50' w
This fast-growing, native, oval-shaped tree has a straight trunk and broad canopy. Tulip trees are named for their 2-inch yellow and orange tulip shaped flowers that bloom from May – June. Great habitat value.
- 34 Red Oak** N, S, Z3, Mature 60-70' t x 60-70' w
Northern Red Oak, a native, deciduous shade tree of the Northeast, is a dominant, fast growing tree with a round shape. Deep red foliage is exhibited in the fall. A keystone species in particular relating to insects and birds.

NWCD'S 2ND ANNUAL 'NO MOW MAY' PHOTO CONTEST

NWCD is supporting the 'No Mow May' initiative and encouraging you not to mow your lawn in the month of May. Your grass will get long, and flowers will pop up but don't worry, you will be feeding many pollinators and insects! You can do the entire lawn or just a small section! Take photos of your un-mowed lawn, and tag @NWCD.ORG on Facebook or @northwestconservationdistrict on Instagram or email your photos to info@nwcd.org. We will pick a winner on May 31st, and you will receive a small prize. Email or call us (860-626-7222) to order a 'No Mow May' sign for your lawn.



FRUIT AND VEGETABLE GARDEN PLANTS

- 35 Pawpaw** N, P, S, PSh, Z5, Mature 20-25' t x 20-25' w
A native understory tree with deep brownish-purple flowers from April to May followed by long, tapered green leaves, a food source for the zebra swallowtail caterpillar. Sometimes called "the custard-apple," the pawpaw ranks as the largest indigenous edible fruit in the United States. Deer avoid its leaves and branches but possums, foxes, squirrels, raccoons, and birds are all known to enjoy pawpaw fruit. Sold in pairs for best results.
- 36 Pink Champagne Currants** S, Z3, Mature 3-5' t x 3-5' w
This is the tastiest currant on the market for fresh eating! Pink Champagne currant is a vigorous upright bush, free of leaf diseases, with a beautiful translucent pink fruit. Pink Champagne is easy to grow, produces fruit of high quality and good flavor. A cross between white and red currants, high yielding and good for preserves, jams and jellies.
- 37 MacDonald Rhubarb** S, Z4, Mature 3' t x 3' w
This rhubarb variety is known for its excellent production for commercial growers and home gardeners. This very vigorous, upright growing strain produces large, tender stalks and has an acceptable red color. Shows resistance to root-rot problems. Rhubarb bears a light harvest in the 2nd year and a full harvest in the 3rd year.
- 38 Millennium Asparagus** S, Z3, Bundle of 25 one-year-old plants
Superior all-around performer with high quality spears, tender, and with good flavor. Successful in a wide range of soil types. An asparagus patch is a long term investment that will continue to yield abundantly for 20 years or more if given proper planting and care. Soil testing is encouraged. Plant 18-24" apart.
- 39 Nova and Joan C Red Raspberries** S, Z3, Z4, Five plants will fill a 10-foot row
This award-winning combo of 5 mid-summer and 5 late-season winter-hardy bushes will extend your eating enjoyment. Nova is highly productive, producing firm bright berries with rich, intense flavor. Joan C is a fall-bearing, high yielding, thornless plant with large, easy-to-pick red berries great for freezing.
- 40 Blueberries** S, RG, P, Z4-5, Set of three 2-gallon potted bushes
Bluecrop - mid-season with large sweet-to-tart tasting fruit. S, Z4, Mature 5-6' t x 5-6' w
Blue Jay - mid-season with medium sized, mild flavored fruit. S, Z4, Mature 5-7' t x 5-7' w
Chandler - mid-to-late season with very large fruit. S, Z5, Mature 5-7' t x 5-7' w
Known for their fruit's taste and nutritional value, blueberry bushes are great rain garden plants, a pollinator and food source for many birds and bees and finish with fiery-red fall color. Plants need acidic soils with pH of 4.5 to 4.8.
- 41 Seascape Everbearing Strawberries** S, Z4, Spread 24" x 36", Fruit late summer and fall
A highly successful everbearing plant for northeastern growers for summer and fall. Large firm berries considered to have the best flavor of any of the everbearers. Self-pollinating. Planting instructions included.
- 42 Pink Lady Apple Tree** Semi-dwarf, P, S, Z6, Mature 8-10' t x 5-6' w
An apple tree becoming known for its medium-size fruit with rich yellow skin blushed with pink. Its fruit's unique sweet/tart flavor with a subtle aroma of pear, melon and cider, and long shelf life makes it perfect eaten fresh or used in cooking. Trees are self-sterile and require another apple variety to produce fruit. Bees visiting pollen-laden blossoms transfer pollen from one apple tree to others, causing cross-pollination and fertilization.
- 43 Winesap Apple Tree** Semi-dwarf, P, S, Z5, Mature 12-15' t x 12' -15' w
A well-known American heirloom apple with a great combination of tart and sweet taste. Long-lived after being harvested, lasting 6 months or more in cold storage. Its rich, wine-like flavor works well for applesauce, pies, and cider, both hard and soft.
- 44 Glohaven Peach Tree** Semi-dwarf, S, Z5, Mature 12-15' t x 12-15' w
Showy pink flowers in early spring against glossy green foliage. Large, round, reddish fruit with firm, yellow juicy flesh good for eating fresh or canning ripens in early September. A wonderful dessert peach that's resistant to browning.
- 45 Bosc Pear Tree** Semi-dwarf, S, Z5, Mature 15-18' t x 12-18' w
A vigorous grower and vigorous producer with large, russeted fruit maturing in early October. It's tender flesh and smooth texture is perfect for fresh eating while also being well suited for canning and preserves.

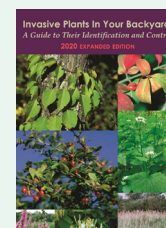
N=Native/nativar RG=Rain garden P=Pollinator S=Sun PSh=Part Shade Sh=Shade Z=Zone

GROUNDCOVERS, GRASSES AND FERNS

- 46 Ground Hug Chokeberry** N, P, S, PSh, Z3, Mature 8-14" t x 30-36" w
Tough nativar shrub that naturally grows as a dense groundcover. In spring, dainty white flowers nestle among the glossy green foliage. If left untrimmed, dark purple berries attractive to birds, appear in summer followed by outstanding red foliage. Tolerant of many soil conditions, serves to keep down weeds and stabilizes soil while beautifying difficult areas. Aka UConn UCONNAM012.
- 47 Massachusetts Kinnikinnick** N, P, S, PSh, Z3, Mature 6-12" t x 4-6' w
This native cultivar groundcover does best in poor, sandy soil. No more than 12" high, its small, lustrous green foliage hugs its branches, providing wildlife food and shelter. Native bees are attracted to its small, showy pink flowers, and birds, small critters and even bears are attracted to its ample supply of late-summer-to-fall berries.
- 48 Barren Strawberry** N, S, Z3, Mature 4-6" t x 12-18" w
A small scale, native, dense groundcover that thrives in tough soil while looking fresh and colorful year round. Dainty, single yellow flowers from April to July, three lobed, strawberry-like dark green foliage with bronze winter color.
- 49 Yellowroot** N, P, S, PSh, Z3, Mature 1-3' t x 2-4' w
A native woody groundcover that easily spreads to form a 1-3' tall dense carpet. Small spring purple flowers produce star-shaped fruits eaten by birds and other small animals. A perfect plant to use as a transition between sun and shade, and wet to dry. Outstanding fall color.
- 50 Blonde Ambition Blue Grama Grass** N, P, Z4, Mature 30-36" t x 30-36" w
Great native ornamental grass with a profusion of big, flag-like, chartreuse flowers held horizontally above the leaves. Resilient stems stay upright through the winter. Attracts butterflies and birds, Deer resistant, extremely cold hardy and drought tolerant.
- 51 Standing Ovation Little Bluestem** N, P, S, Z3, Mature 3-4' t x 12" w
Bluish-green, upright foliage changes to a display of fiery colored foliage in fall. Its seed heads are prized by native songbirds and its stems provide winter landscape interest and cover for birds and other native critters. Thrives in poor, dry soil. 'Standing Ovation' is a naturally occurring nativar discovered in Pennsylvania in 2003.
- 52 Sweet Fern** N, P, S, PSh, Z2, Mature 2-4' t x 3-4' w
Although considered a colonizing ground cover, Sweet Fern is an upright woody shrub native to all of eastern United States. Great for sandy dry areas, its sweet scented, fern-like green foliage (hence the name), is a habitat garden "star" for its role as a larval host for a wide variety of moths and butterflies.

INVASIVE PLANTS IN YOUR BACKYARD? CONSIDER THESE ALTERNATIVES.....

For more information on invasive alternatives, visit, www.ct.gov/deep/invasivespecies_cipwg.uconn.edu/invasive_plant_list and https://www.conservect.org/wp-content/uploads/2020/10/Invasives_guide_2020_web.pdf



INVASIVE	ALTERNATIVES
Burning Bush (<i>Euonymus alatus</i>)	Chokeberry, Highbush Blueberry, Witch-hazel
Japanese Barberry (<i>Berberis thunbergii</i>)	Inkberry, Winterberry, New Jersey Tea, Summersweet
Multiflora Rose (<i>Rosa multiflora</i>)	Chokeberry, Highbush Blueberry, Summersweet, Winterberry
Autumn Olive (<i>Elaeagnus umbellata</i>)	Chokeberry, Inkberry, Winterberry
Japanese Knotweed (<i>Polygonum cuspidatum</i>)	Elderberry, Pussy Willow, Buttonbush
Common Buckthorn (<i>Rhamnus cathartica</i>)	Serviceberry, Chokeberry, Witch-hazel, Viburnum
Tree of Heaven (<i>Ailanthus altissima</i>)	Eastern Redbud, Flowering Dogwood, Serviceberry
Privets - Border, California & European	Black and Red Chokeberry, Inkberry, Viburnum

Supporting Our Local Farmers

Our small state of Connecticut is home to over 5,000 farms. One of the lessons learned from the pandemic is to know the source and availability of your food. Supporting our local farmers has never been more important, and easier. Visiting your local farmer's market, joining a CSA or a Community Supported Agriculture program, stopping by a farm to purchase pre-picked produce, or harvesting yourself at a PYO or Pick-Your-Own farm - all of these are excellent options that can lead to fun-filled adventures for any age. Purchasing produce from local farms reduces your carbon footprint, keeps these hard working farmers in business and gives you a real connection to your food.

One of the many dedicated family farms in our District is Deeply Rooted Farms in Harwinton, CT. Jon and Patti Sederquist grow asparagus, June strawberries, ever-bearing strawberries, raspberries, pumpkins, gourdes, squash and Christmas trees. Families visit to partake in PYO crops, to enjoy the farm and the experience it provides. You can find them, and many other farms, at the Litchfield and Collinsville farmers markets. Our local farms are invaluable. They provide beautiful spaces to visit and teach our children where their food is grown. What farms do you and your family enjoy supporting? To support your local farms, go to: <https://portal.ct.gov/doag/marketing/marketing/find-a-farmer> or contact Leeane Marvin at leanem@nwcd.org.

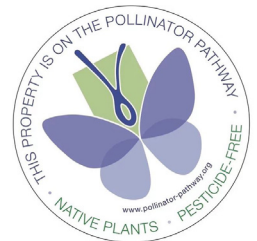


Deeply Rooted Farms in Harwinton, CT

A Note from NWCD Staff

In honor of Earth Day, we are asking you to join us on NWCD/partnership initiatives:

- **National Audubon's** mission to protect birds and bring birds to your home by growing native plants in your backyard. VISIT <https://www.audubon.org/PLANTSFOR-BIRDS>
- **Pollinator Pathway Northeast's** mission to establish pollinator friendly habitats in your backyard. To register your garden, visit <https://www.pollinator-pathway.org/> Call NWCD at 860-626-7222 to learn how receive a medalion - pictured on the right.
- **White Memorial Conservation Center** in Litchfield CT, where *'everyday is Earth Day'*! To learn more about their events and to visit, check out: <https://whitememorialcc.org/calendar/>
- **2022 is the 50th anniversary of the enactment of Connecticut's Inland Wetlands and Watercourses Act!** All year long, our partners will have special events to celebrate this important milestone. Our partners include: Connecticut Association of Wetland Scientists, our four sister Connecticut Conservation Districts, the Water Planning Council and their subgroups, Rivers Alliance of CT, CT DEEP and other state agencies, and many more! Follow our social media for more information.



Thanks from NWCD Staff to those who contributed photos to the newsletter and online store this year!

- Debbie and Richard Martin, Litchfield Hills Audubon
- Brett Marvin, <https://www.instagram.com/brettmartin/>
- Kelsey Sudol, NWCD Staff
- Prides Corner / American Beauties Native Plants



The Northwest Conservation District
1185 New Litchfield St.
Torrington, CT 06790
Phone (860) 626-7222
www.nwcd.org



The Northwest Conservation District (NWCD) is a local environmental non-profit 501c(3) organization, serving the towns of Barkhamsted, Bethel, Bethlehem, Bridgewater, Brookfield, Canaan (Falls Village), Colebrook, Cornwall, Danbury, Goshen, Hartland, Harwinton, Kent, Litchfield, Morris, New Fairfield, New Hartford, New Milford, Newtown, Norfolk, North Canaan, Plymouth, Roxbury, Salisbury, Sharon, Sherman, Southbury, Thomaston, Torrington, Warren, Washington, Watertown, Winchester and Woodbury.

Board of Directors:

Larry Rousseau, Torrington, Chairman
Ray Furse, Warren, Vice Chair
Sharon Tingley, Sharon, Secretary
Doreen Lynch-Sudol, Morris, Treasurer
Curtis S. Read, Bridgewater
Tara Jo Holmberg, Winsted
Dan McGuinness, Torrington
Michael Sconyers, Norfolk
Rusty Warner, New Hartford
Marissa Wright, Goshen
Leya Edison, Goshen, Alternate

District Staff:

Cynthia Rabinowitz, *Executive Director*
Karen Griswold Nelson, *Programs*
Kelsey Sudol, *Environmental Associate*
Leeane Marvin, *Agricultural Technician*

2022 Spring Trout Stocking Sale - Adult Rainbow & Brook Trout Order Deadline - April 1

Trout play an important role in balancing a healthy stream, pond or lake ecosystem. As a top predator, trout control and stabilize aquatic ecosystems, which is why populating your local areas with trout can be so helpful!

Stock your pond with 9-to-11" Connecticut raised trout, which are rewarding to feed and observe, catch and release, or enjoy as delicious fresh fish. We will obtain all DEEP liberation permits for you and provide order confirmation.

The **minimum order** of 50 fish is \$365 and \$50 delivery charge. You can also purchase 25 additional fish for \$185. Delivery date is April 9th, with the specific time set by the hatchery.



Call 860-626-7222 or email karengnelson@nwcd.org for more information.

NWCD participates in **Give Local**, an online 36-hour give-a-thon on givelocalccf.org, hosted by the **Connecticut Community Foundation**.

NWCD is working with our Community Partners to address food resiliency in our 34 District towns. All donations via **Give Local** will be boosted by bonus funds provided by **Connecticut Community Foundation** and their **Give Local** sponsors!



Northwest Conservation District
1185 New Litchfield Street
Torrington, CT 06790

Non-Profit Org
US Postage Paid



Earth Day Plant Sale Order Form inside

Order by mail or visit our online store at nwcd.org
GO GREEN! For ONLY electronic communications,
request at info@nwcd.org.

2022 SPRING CONSERVATION CALENDAR

April

- 1 Spring Adult Trout Stocking Order Deadline. See inside back cover for order details
- 9 NWCD Spring Trout Delivery
- 13 Plant Order Deadline for our 40th NWCD EARTH DAY PLANT SALE
- 26-27 Give Local Greater Waterbury & Litchfield Hills - donate to NWCD or many other amazing non-profits at www.givelocalccf.org
- 22-24 NWCD EARTH DAY PLANT SALE PICK-UP, Goshen Fairgrounds, 116 Old Middle St., Route 63, Goshen, Earth Day Plant Sale Order Form inside or order online at nwcd.org



Woodbury Earth Day Festival: For April events, visit <https://www.woodburyearthday.org/programs>

Online Resources

Benefits of Native Plants Storymap: <https://nwcd.org/storymaps/>

CT Compost Alliance Virtual Web Series: To view, search RC&D compost conference on YouTube

Follow the Forest StoryMap: Created by HVA, learn about Core Forest at

<https://hvatoday.org/connecting-forest-corridors/>

Follow NWCD on [instagram.com/northwestctconservationdistrict/](https://www.instagram.com/northwestctconservationdistrict/)
[facebook.com/nwcd.org](https://www.facebook.com/nwcd.org) and as NWCD on YouTube