

Legend

- Appalachian Trail
- Town Boundary
- Waterbody
- Watercourse
- Core Forest Habitat (>250 acres)

Impervious Surface Landcover

- High Impervious Surface Percentage
- Low Impervious Surface Percentage

Map Date: March 20, 2019

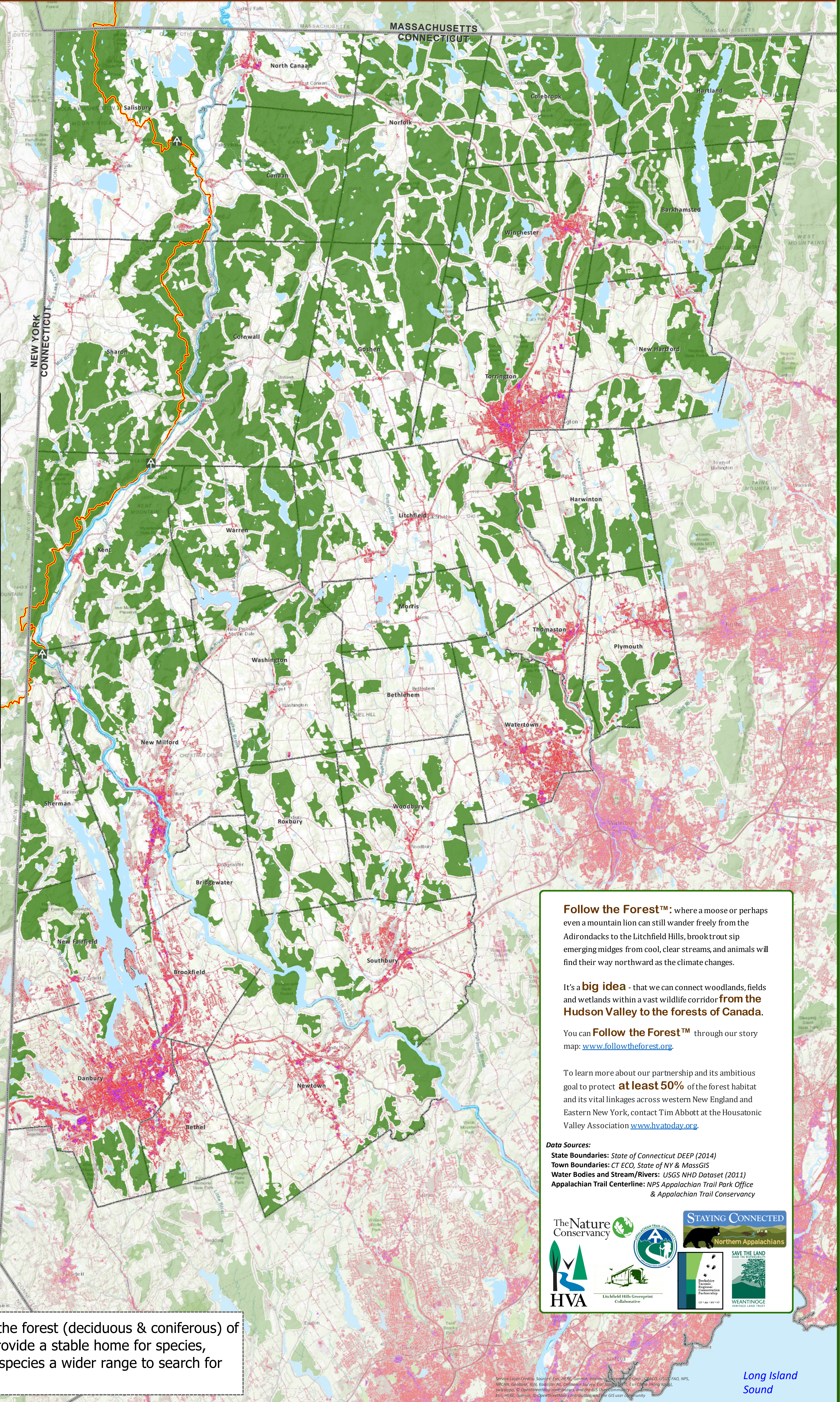
0 1.5 3 6 Miles

1 in = 2 miles

Map Prepared by:
Stacy Deming, GISP
GIS Manager
hvatoday@gmail.com
860.672.6678
Housatonic Valley Association
Cornwall Bridge, CT 06754
www.hvatoday.org

Location Map

Service Layer Credits: Sources: Esri, HERE, Garmin, Intermap, increment P Corp., GEBCO, USGS, FAO, AISC, Swisstopo, © OpenStreetMap contributors, and the GIS User Community



Follow the Forest™: where a moose or perhaps even a mountain lion can still wander freely from the Adirondacks to the Litchfield Hills, brook trout sip emerging midges from cool, clear streams, and animals will find their way northward as the climate changes.

It's a **big idea** - that we can connect woodlands, fields and wetlands within a vast wildlife corridor from the Hudson Valley to the forests of Canada.

You can **Follow the Forest™** through our story map: www.followtheforest.org.

To learn more about our partnership and its ambitious goal to protect **at least 50%** of the forest habitat and its vital linkages across western New England and Eastern New York, contact Tim Abbott at the Housatonic Valley Association www.hvatoday.org.

Data Sources:
 State Boundaries: State of Connecticut DEEP (2014)
 Town Boundaries: CT ECO, State of NY & MassGIS
 Water Bodies and Stream/Rivers: USGS NHD Dataset (2011)
 Appalachian Trail Centerline: NPS Appalachian Trail Park Office & Appalachian Trail Conservancy

Core Forest Habitat represent the forest (deciduous & coniferous) of at least 250 ac. Core forests provide a stable home for species, protect biodiversity, and allow species a wider range to search for shelter or food.

