

Northwest Conservation District

Earth Day Plant Sale

April 24, 25 and 26, 2020

Friday 9-6, Saturday 9-4,

Sunday 10-3

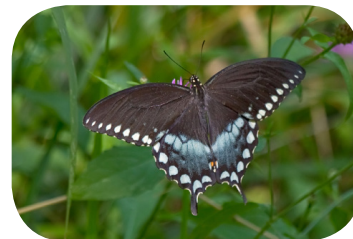
Illustration by
Rose Petruzzi
rosepetruzzi.com



Celebrate the 50th Anniversary of Earth Day!
Goshen Fairgrounds, 116 Old Middle Street

A GUIDE TO OUR EARTH DAY PLANT SALE

NWCD'S EARTH DAY PLANT SALE is our annual major fundraising event. All proceeds support conservation, education, and technical assistance to our 34 northwestern Connecticut towns. In support of the 50th anniversary of Earth Day, we encourage you to celebrate Earth Day by making a change in your backyard or community to promote clean air, clean water, healthy soils, and endangered species, (and in particular pollinators) initiatives.



EARTH DAY SALE PLANTS including shrubs, vines, trees, edibles, groundcovers, and evergreen seedlings and plugs CAN BE PRE-ORDERED using the enclosed order form or online at nwcd.org. All pre-orders are carefully assembled and ready for pickup during the sale. Pre-order customers are invited to our early opening on Thursday afternoon, April 23rd from 3 to 7PM for the best selection of perennials and all Day-of-Sale selections. Pre-order confirmations, complete with directions to the Goshen Fairgrounds, will be emailed or snail mailed mid-April. If you are looking for a plant not on our order form, just call or email us before April 15th.

PRE-ORDER ONLINE After submitting your order on nwcd.org and paying via PayPal, you will receive an email confirmation. Please bring that confirmation, on either an electronic device or printed out, to the sale in order to pick up your order! Orders submitted via check by mail will receive this form in the mail to bring.



PERENNIALS AND DAY-OF-SALE PLANTS At our three-day sale, you will find over 3,500 perennials, including native, nativar and non-native potted plants, carefully chosen for use in all types of settings, from riparian buffers, pollinator pathways and bird gardens, to rain and rock gardens. Perennials CANNOT BE PREORDERED, so come early for the best selection. A complete perennial list will be available on our website in mid-March and will include plant height and width, color, and bloom time. At our sale, perennials are placed in alphabetical order by *Latin name* with "large print" signs containing common names, photographs and unique descriptions. **DAY-OF-SALE** plants include Chinese Chestnut, Red Bud, Sweet Fern, Climbing Hydrangea, Korean Spice Viburnum, Red Twig Dogwood, Juniper, Flowering Almond, Yellow Lilac, assorted Hollies and Mountain Laurel, fruit trees and rhubarb crowns, and a selection of various groundcovers, sedges, ferns and grasses.

PLANT DESCRIPTIONS - A GUIDE TO CHOOSING YOUR PLANTS Our plant sale selections, listed in order by Latin name, include many important native species and no non-native invasives. Our plant descriptions contain mature size and width, information as to where best to grow plants, in sun, part shade or shade, and USDA Gardening Zones. Additional information is supplied regarding their use as rain garden, pollinator or habitat-friendly selections, and bloom times. Helpful websites for more in-depth information and identification include Missouri Botanical's Plant Finder at www.missouribotanicalgarden.org/plantfinder, Native Plant Trust Go Botant at <https://gobotany.nativeplanttrust.org/> and Lady Bird Johnson Wildflower Center at <https://www.wildflower.org/plants>.

LITCHFIELD HILLS AUDUBON SOCIETY (LHAS) is partnering with NWCD for a third year to staff a "Plants for Birds" table to distribute information and educate attendees on National Audubon's Plants for Birds program, <https://www.audubon.org/plantsforbirds>. Both LHAS <https://www.lhasct.org> and Sharon Audubon <https://sharon.audubon.org> are chapters of the National Audubon Society audubon.org and maintain public sanctuaries for the benefit of wildlife, conservation, and education. Information for the "Pollinator Pathway" program <https://www.pollinator-pathway.org/>, SustainableCT <https://sustainablect.org>, Connecticut forestry initiatives and core forest mapping with pollinator pathways for birds, and habitat, will be available as well as information from our many other conservation partners.



Northwest Conservation District Info@nwcd.org

38th Annual Earth Day Plant Sale * Order Deadline Wednesday April 15, 2020

Pick up at Goshen Fairgrounds Friday, Saturday and Sunday, April 24, 25 & 26

Name _____ Phone _____

Address _____ Town _____ State _____ Zip _____

Email _____

Mail this order form or place your order online at www.nwcd.org

NATIVE AND ORNAMENTAL SHRUBS AND VINES

Gallon size Price How many Total

			Gallon size	Price	How many	Total
1	Glossy Abelia	<i>Abelia x grandiflora</i>	3	\$44		
2	Shadblow Serviceberry (clump)	<i>Amelanchier canadensis</i>	3	\$44		
3	Brilliant Red Chokeberry	<i>Aronia arbutifolia</i> 'Brilliantissima'	3	\$40		
4	Viking Black Chokeberry	<i>Aronia melanocarpa</i> 'Viking'	3	\$40		
5	Sweet Azalea	(<i>Rhododendron</i>) <i>Azalea arborescens</i>	2	\$34		
6	Trumpet Vine	<i>Campsis radicans</i>	2	\$30		
7	Beyond Midnight Bluebeard	<i>Caryopteris x clandonensis</i> 'Beyond Midnight'	2	\$30		
8	Fiber Optics Buttonbush	<i>Cephalanthus occidentalis</i> 'Fiber Optics'	3	\$38		
9	Hummingbird Summersweet	<i>Clethra alnifolia</i> 'Hummingbird'	2	\$28		
10	Silky Dogwood	<i>Cornus amomum</i>	2	\$28		
11	Kodiak Orange Bush Honeysuckle	<i>Dievilla rivularis</i> 'Kodiak Orange'	2	\$30		
12	Mount Airy Witch-Alder	<i>Fothergilla major</i> 'Mt Airy'	2	\$32		
13	Common Witch-hazel	<i>Hamamelis virginiana</i>	3	\$38		
14	Annabelle Hydrangea	<i>Hydrangea arborescens</i> 'Annabelle'	3	\$40		
15	Snow Queen Oakleaf Hydrangea	<i>Hydrangea quercifolia</i> 'Snow Queen'	3	\$40		
16	Densa Inkberry	<i>Ilex glabra</i> 'Densa'	2	\$30		
17	Winterberry Holly	<i>Ilex verticillata</i>	2	\$30		
18	Red Sprite Winterberry	<i>Ilex verticillata</i> 'Red Sprite'	3	\$35		
19	Pink Charm Mountain Laurel	<i>Kalmia latifolia</i> 'Pink Charm'	2	\$36		
20	ReJoyce Coastal Leucothoe	<i>Leucothoe axillaris</i> 'ReJoyce'	2	\$32		
21	Northern Spicebush	<i>Lindera benzoin</i>	3	\$40		
22	Major Wheeler Honeysuckle	<i>Lonicera sempervirens</i> 'Major Wheeler'	1	\$22		
23	Northern Bayberry	<i>Myrica (Morella) pensylvanica</i>	2	\$30		
24	Independence Rhododendron	<i>Rhododendron maximum</i> 'Independence'	2	\$35		
25	Pussy Willow	<i>Salix discolor</i>	2	\$28		
26	York Elderberry	<i>Sambucus canadensis</i> 'York'	3	\$33		
27	Steeple Bush	<i>Spiraea tomentosa</i>	2	\$30		
28	Blue Blaze Arrowwood Viburnum	<i>Viburnum dentatum</i> 'Blue Blaze'	3	\$40		

NATIVE AND ORNAMENTAL TREES				Size/ Count	Price	How many	Total
29	Heritage River Birch (clump)	<i>Betula nigra</i> 'Heritage'	7 gallon	\$98			
30	Pagoda Dogwood	<i>Cornus alternifolia</i>	7 gallon	\$98			
31	Franklin Tree	<i>Franklinia alatamaha</i>	3 gallon	\$58			
32	Radiant Flowering Crabapple	<i>Malis x</i> 'Radiant'	7 gallon	\$98			
33	Sourwood Tree	<i>Oxydendrum arboreum</i>	3 gallon	\$58			
HOME GARDEN - FRUIT TREES, BERRIES AND EDIBLES							
34	Pawpaw	<i>Asimina triloba</i> (Set of two pots)	2 quart	\$42			
35	Italian Everbearing Fig Tree	<i>Ficus carica</i> 'Italian Everbearing'	3 gallon	\$50			
36	Pink Lady Apple Tree	<i>Malus x</i> 'Pink Lady'	7 gallon	\$58			
37	Red Haven Peach Tree	<i>Prunus x</i> 'Red Haven'	7 gallon	\$58			
38	Stella Sweet Cherry Tree	<i>Prunus x</i> 'Stella'	7 gallon	\$58			
39	Bosc Pear Tree	<i>Pyrus x</i> 'Bosc'	7 gallon	\$58			
40	Northland, Bluejay & Jersey Blueberries	<i>Vaccinium</i> - Set of 3 potted bushes - 1 early-, 1 mid- and 1 late-season	2 gallon	\$58			
41	Seascape Everbearing Strawberries	25 bare root plants	25 rts	\$15			
42	Nova and Joan C Red Raspberries	5 early- and 5 late-season canes	10 cns	\$30			
43	Millenium Asparagus	25 bare-root plants	25 rts	\$20			
GROUNDCOVERS							
44	Christmas Wintergreen	<i>Gaultheria procumbens</i>	1 gallon	\$20			
45	Massachusetts Kinnikinnick	<i>Arctostaphylos uva-ursi</i> 'Massachusetts'	1 gallon	\$20			
46	Allegheny Spurge	<i>Pachysandra procumbens</i>	1 gallon	\$20			
47	Japanese Pachysandra (Pre-Order Only)	Flat with 100 well-rooted plants	100 rts	\$40			
48	Yellow Root	<i>Xanthorhiza simplicissima</i>	2 gallon	\$30			
HABITAT FRIENDLY EVERGREEN SEEDLINGS AND PLUGS							
49	Norway Spruce <i>Picea abies</i>	25 seedlings	3-year seedlings 10-18 inches	\$30			
50	Colorado Blue Spruce <i>Picea pungens</i>	25 seedlings	3-year seedlings 9-15 inches	\$30			
51	Concolor Fir <i>Abies concolor</i> 'Sante Fe'	1 plug	2-year plug 6-12 inches	\$4			
52	Eastern Red Cedar <i>Juniperus virginiana</i>	1 plug	2-year plug 6-12 inches	\$4			
<p align="center">Volunteers needed!</p> <p>Be part of the area's largest Earth Day celebration. Join other gardeners and volunteers to support local conservation.</p> <p>Many jobs available from Monday, April 20 through Sunday, April 26</p> <p>YES, I can help for a couple of hours. The best day/time for me is: or contact karengnelson@nwcd.org</p>				<p>Order early for best selection.</p> <p>Mail to NWCD 1185 New Litchfield Street Torrington, CT 06790 Checks to NWCD, no sales tax</p>			Total

N=Native/nativar RG=Rain garden P=Pollinator S=Sun PSh=Part Shade Sh=Shade Z=Zone

NATIVE AND ORNAMENTAL SHRUBS AND VINES

- 1 Glossy Abelia** S, PSh, P, Z5/6, 3-6' t x 3-6' w
Small, glossy, semi-evergreen leaves form a backdrop for waves of small, tubular white to light pink fragrant nectar-laden blooms from late June through frost. Distinctive, rounded, arching form is great for border plantings. Deer resistant, pollinator attractive and drought resistant once established.
- 2 Shadblow Serviceberry (clump)** N, P, S, PSh, Z3, Matures 14-16' t x 6-8' w
A vigorous multi-stemmed native and true harbinger of spring with snowy white April flowers. Blooms change to small purple-red fruits attractive to birds in early summer. Deep green foliage provides golden yellow to orange fall color giving way to clean, gray, muscular bark that shows well all winter.
- 3 Red Chokeberry** N, RG, P, S, PSh, Z4, Mature 6-8' t x 3-5' w
This versatile buffer/rain garden nativar tolerates wet soils and offers dark, shiny foliage with profuse white flowers in May, providing nectar for native bees. Dense bunches of glossy red fruit ripen in summer and persist through the winter, providing food for many of our prized bird species. Bright-red autumn foliage.
- 4 Viking Black Chokeberry** N, RG, P, S, PSh, Z3, Mature 3-5' t x 4-6' w
Showy, fragrant mid-May flowers give rise to flattened heads of green fruit that turn black in late summer. Its edible nutrient rich fruit provides food for native birds and wildlife and can be used in preserves, jams, fruit drinks and even wine to take full advantage of its great taste and strong health benefits. Deep green foliage turns fiery red as the weather cools. Thrives even in the least fertile, roughest landscape spots.
- 5 Sweet Azalea** N, P, PSh, Z4, 8-12' t x 8-12' w
Fragrant, funnel-shaped, white/pink-tinged flowers in late spring attract butterflies, hummingbirds and native birds. Glossy, bright green foliage turns red to purple in fall. Hardy and fast growing. Requires moist, partly shaded sites.
- 6 Trumpet Vine** N, P, S, Z4, Mature 20-30' t x 20-30' w
An easy-to-grow native vine providing an abundance of reddish-orange flowers that attract hummingbirds and supply food for a variety of native bees and insects. Its big expansive, thick growth provides cover and essential nesting areas for a big cross-section of native songbirds. A larval host for the trumpet vine sphinx moth.
- 7 'Beyond Midnight' Bluebeard** P, S, Z5, Mature 2-3' t x 2-3' w
Deep-blue, fragrant, long blooming flowers provide late season color and nectar sources for bees, butterflies, and hummingbirds. Mounding and compact with aromatic, dark green glossy foliage. Prefers well-drained soil and full sun.
- 8 Fiber Optics Buttonbush** N, RG, P, PSh, Sh, Z4, Mature 5-7' t x 6-8' w
A new compact habitat-friendly nativar for small garden spaces. Perfectly round, inch-wide, dove-white spring flowers are a nectar source for hummingbirds, butterflies, insects and bees. Rich glossy green foliage. Large round summer fruits attract songbirds, and spent blooms form into 1" diameter red balls fall interest. Likes wet soils.
- 9 Hummingbird Summersweet** N, RG, P, PSh, Sh, Z4, Mature 2-4' t x 3-5' w
A shade-loving, dense nativar perfect for woodland gardens. Fragrant white flower spikes in late summer attract native bees, hummingbirds and butterflies. Lustrous deep green foliage and yellow fall foliage
- 10 Silky Dogwood** N, P, S, PSh, Z2, Mature 3-4' t x 4-5' w
A native landscape buffer plant with late spring and early summer white blooms attracting butterflies, honeybees and a host of other beneficial insects. High-fat-content, porcelain-blue berries ripen in late summer and attract over 45 different kinds of game and songbirds. Red fall foliage against red-brown stem
- 11 Kodiak Orange Bush Honeysuckle** N, P, S, PSh, Z2, Mature 3-4' t x 4-5' w
Tough and drought tolerant, this colorful nativar performs well in dry areas and sun or partial shade. Showy russet foliage emerges in spring followed by nectar-filled yellow flowers attracting hummingbirds and support bees. Glowing orange fall foliage makes it an ecofriendly alternative to Burning Bush.
- 12 Mount Airy Witch-Alder** N, P, S, PSh, Z4, Mature 4-5' t x 4-5' w
This easy-to-grow, dense and upright nativar is noted for its aromatic bottlebrush-like honey scented flowers, dark blue-gray summer foliage and multi-color fall color. Early nectar source for native pollinators and shelter for birds.

- 13 Common Witch-hazel** N, RG, S, PSh, Z3, Mature 8-10' t x 10-15' w
A native small tree or large shrub with yellow, fragrant flowers blooms from October through December. Attractive foliage in all growing seasons. Large, bluish-green bronze-tinged spring foliage changes to thick green summer foliage providing covered protection for numerous bird species followed by yellow to yellowish-orange colors in fall.
- 14 Annabelle Hydrangea** N, S, PSh, Z4, Mature 3-5' t x 4-6' w
An old-fashioned, easy-care, deer-and drought-resistant landscape anchor attracts pollinators. Huge white blooms appear on upright stems over green foliage in July, age to pink in September. Thrives in almost any well-drained soil.
- 15 Snow Queen Oakleaf Hydrangea** N, P, PSh, Z5, Mature 6-8' t x 6-8' w
An all-season performer. Pure white July flowers create a wonderful contrast to the large, dark green, oak-like leaves. Disease-resistant foliage turns striking purplish pink in fall. Orange buds and copper-brown exfoliating bark, create winter interest and habitat for pollinators and other creatures.
- 16 Densa Inkberry** N, RG, P, S, PSh, Z5, Mature 3-4' t x 4-5' w
This tough, durable broadleaf evergreen is a versatile plant that tolerates many landscape situations, ranging from sandy soils, places prone to exposure to road salt or seaside conditions, riparian buffers and rain gardens. Habitat friendly, it serves as year-round cover and an excellent food source with its black berries for many native birds. Great alternative to boxwood as well as being an **Invasive Alternative** to Japanese Barberry and Privets.
- 17 Winterberry** N, RG, S, PSh, Sh, Z3 7-8' t x 7-8' w
Quintessential native with dark green lustrous foliage, upright rounded form for bird habitat and bright red berries for a fall food source for native birds. Tolerates most sunny or partly shaded spots with moist or wet soils. Great rain garden and riparian buffer plants as well as being an **Invasive Alternative** for many invasive plants, including Burning Bush, Japanese Barberry, Multiflora Rose and Autumn Olive. Pollinators available day of sale.
- 18 Red Sprite Winterberry** N, RG, S, PSh, Z3, 3-4' t x 4-5' w
A dwarf carefree winterberry nativar with long lasting huge red berries on dense compact branching providing food for overwintering birds. Slow growing with an upright, rounded habit and glossy medium green leaves; perfect for rain gardens. Other selections available day of sale include 'Winter Red' and 'Magical Showtime'.

INVASIVE PLANTS IN YOUR BACKYARD? CONSIDER THESE ALTERNATIVES.....

For more information on invasive alternatives, visit, www.ct.gov/deep/invasivespecies, cipwg.uconn.edu/invasive_plant_list and https://www.conservect.org/wp-content/uploads/2018/01/Invasives_guide_2016_web.pdf.

Invasive

Alternatives

Burning Bush (<i>Euonymus alatus</i>)	Bayberry, Chokeberry, High Bush Blueberry, Witch-hazel, Viburnum
Japanese Barberry (<i>Berberis thunbergii</i>)	Bayberry, Inkberry, Winterberry, Silky Dogwood, Summersweet
Multiflora Rose (<i>Rosa multiflora</i>)	Chokeberry, Highbush Blueberry, Summersweet, Winterberry
Autumn Olive (<i>Elaeagnus umbellata</i>)	Bayberry, Chokeberry, Inkberry, Winterberry
Japanese Knotweed (<i>Polygonum cuspidatum</i>) ...	Buttonbush, Elderberry, Pussy Willow, Spicebush
Common Buckthorn (<i>Rhamnus cathartica</i>).....	Serviceberry, Chokeberry, Witch-hazel, Spicebush, Viburnum
Princess Tree (<i>Paulownia tomentosa</i>).....	Serviceberry, Flowering Dogwood, Red Bud, Spicebush
Privets - Border, California & European.....	Black and Red Chokeberry, Inkberry, Viburnum

- 19 Pink Charm Mountain Laurel** N, S, PSh, Sh, Z4, Mature 8-10' t x 8-10' w
A Connecticut state flower nativar with shiny deep green foliage, a dense, rounded form, and a superb spring flower show that starts deep pink in bud and opens to a pleasing yet strong pink color by early June. Serves as great cover source for woodland birds and its flowers provide a wealth of nectar for native bees.
- 20 ReJoyce Coastal Leucothoe** N, PSh, Sh, Z6, Mature 2-3' t x 3-4' w
New spring growth emerges rich red, maturing to deep green for summer. Drooping clusters of urn shaped white to light pink flowers appear early to mid-spring, attracting native bees. Red, purple, and burgundy foliage adorn the zigzagging purplish-red stems in fall through winter.

- 21 Northern Spicebush** N, RG, P, S, PSh, Z4, Mature 6-10' t x 6-10' w
Oval, upright native buffer plant with early-April yellow blooms providing early-season nectar to bees and butterflies. Host plant to spicebush swallowtail butterfly. Fall brings important red berries for birds and showy yellow foliage
- 22 Major Wheeler Trumpet Honeysuckle** N, P, S, PSh, Z4, Mature 20-30' t x 20-30' w
Masses of long, tubular, bright-red trumpet flowers provide neighborhood hummingbirds and butterflies a great source of flower fragrance and nectar late May through summer. Dark green, lustrous and mildew-free foliage. Non-aggressive and non-invasive, this twining trumpet nativar is an **Invasive Alternative** for Oriental Bittersweet.
- 23 Northern Bayberry** S, PSh, Z3, Mature 5-6' t x 8-10' w
A truly talented native, thriving in sun to part shade, dry or moist soils, great conditions or road salt spray with ease, all while providing cover for birds and a supply of gray, waxy, berries in the fall and winter that birds love.
- 24 Independence Rhododendron** N, PSh, Sh, Z4, Mature 8-12' t x 8-12' w
A spectacular nativar offering huge, clear-pink flowers in mid-summer, cover for wildlife and nesting spots for song birds. Other color, size and bloom time rhodos available day of sale.
- 25 Pussy Willow** N, P, S, PSh, Z4, 6-15' t x 4-12' w
A true New England native, big in size and appreciated by birds, butterflies and humans. Late winter catkins provide early-season nectar for native bees, and its buds and leaves are a food source for native birds and butterflies.
- 26 York Elderberry** N, RG, P, PSh, 8-10' t x 8-10' w
A great nativar with lovely white spring blossoms followed by heavy crops of extra-large fruit (drupe) clusters. Blooms attract hummingbirds and butterflies and fruit is an important nutrient rich food source for birds. A great rain garden plant with versatile habitat value. Does well paired with 'Adams' (Available day of sale.)
- 27 Steeple Bush** N, RG, P, S, Mature 3-6' t x 3-6' w
A native habitat-rich shrub with upright pinkish-lavender flowers from July to September attractive to a crowd of native insects and butterflies. Its rounded form provides cover and nesting for critter and birds. Yellow fall foliage.
- 28 Blue Blaze Arrowwood Viburnum** N, P, S, PSh, Z4, Mature 5-6' t x 5-6' w
A compact arrowwood nativar with heads of creamy white flowers in late May and early June providing an outstanding nectar source for native bees and butterflies. Blooms lead to heads of deep-blue black berries that are a prime songbird food source. Dark green lustrous foliage with distinctive deep wine frost undersides turns purple-red in fall.

NATIVE AND ORNAMENTAL TREES

- 29 Heritage River Birch (clump)** N, RG, S, PSh, Z4, Mature 35-40' t x 30-35' w
Tawny-white exfoliating bark and yellow fall foliage provide for year-round interest. This multi-stem native cultivar is disease and insect resistant while providing shelter and nesting for birds. A great specimen tree for a rain garden.
- 30 Pagoda Dogwood** N, PSh, Z4, Mature 8-10' t x 8-10' w
Native small understory tree best in moist organic soils in light shade. Fragrant, late, spring white blossoms attract native insects, butterflies and birds and critters relish late summer berries. Yellow to purple-red fall foliage.
- 31 Franklin Tree** N, P, S, Z6, 10-15' t x 6-9' w
A deciduous, understory tree with an upright habit. Fragrant, late white summer camellia-like flowers Dark green, glossy leaves turn orange, red, and purple in the fall. Historically significant and unique,
- 32 Radiant Flowering Crabapple** P, S, Z4, 15-20' t x 15-20' w
Classic crabapple form perfect for small spaces. Single, deep reddish-pink April flowers are followed by bright red ½" fruit in fall. Fruit persists into winter, providing additional interest and food for overwintering birds. Good fall foliage color. Excellent fire-blight resistance.
- 33 Sourwood Tree** N, S, PSh, Z5, 25-30't x 15-20'w
Fragrant small, white, nectar-laden lily of the valley-like flowers born on long drooping strings appear in July and August attracting native insects, bees and butterflies. Deep green, peach-like foliage and deep crimson fall foliage. Attractive and easy to grow – prefers moist, well drained soils.

HOME GARDEN FRUIT TREES, BERRIES AND EDIBLES

- 34 Pawpap** N, P, S, PSh, Z5, Mature 20-25' t x 20-25' w
A native understory tree with deep brownish-purple flowers from April to May followed by long, tapered green leaves, a food source for the zebra swallowtail caterpillar. Sometimes called "the custard-apple," the pawpap ranks as the largest indigenous edible fruit in the United States. Deer avoid its leaves and branches but possums, foxes, squirrels, raccoons, and birds are all known to enjoy pawpap fruit. Sold in pairs for best results.
- 35 Italian Everbearing Fig** Semi-dwarf, S, Z6, Mature 12-15' t x 12-15' w
An easy, self-pollinating fig with reddish-brown fruit larger than the old standby, 'Brown Turkey'. Juicy, sweet pink flesh is delicious either fresh or dried. A rounded tree with big 9" lobed leaves add a distinctly tropical flavor to the landscape. Requires full sun and winter protection.
- 36 Pink Lady Apple Tree** Semi-dwarf, S, Z6, Mature 8-10' t x 5-6' w
A semi-dwarf self-pollinating tree bearing medium-size fruit with rich yellow skin blushed with pink. Apples have a unique sweet tart flavor with a subtle aroma of pear, melon and cider. Long shelf life for these crisp fruits. (HoneyCrisp and Granny Smith apple trees available day-of-sale.)
- 37 Red Haven Peach** Semi-dwarf, S, Z5, Mature 10-12' t x 10-12' w
Heavy-bearing, vigorous tree with medium sized round fruit in late July. Firm creamy-textured yellow flesh under an almost fuzzless red/golden skin Self-fertile, cold and disease resistant. (Elberta Peach available day-of-sale)
- 38 Stella Sweet Cherry** Semi-dwarf, S, Z4, Mature 10-12' t x 10-12' w
Spring showy white flowers followed by plump, bold-red heart shaped fruit. Sweet rich flavor - good for right off the tree, snacking, canning, freezing and drying. Resists cracking, is moderately disease-resistant and self-pollinating. (Lapins Sweet Cherry available day-of-sale.)
- 39 Bosc Pear Tree** Semi-dwarf, S, Z5, Mature 20-30' t x 10-20' w
A vigorous grower and vigorous producer with large, russeted fruit maturing in early October. It's tender flesh and smooth texture is perfect for fresh eating while also being well suited for canning and preserves.
- 40 Blueberries** Set of three 2-gallon potted blueberry bushes
Northland – Z3, Hardy, compact and high yielding mid-season. Mature 4-5' t x 4-5' w.
Blue Jay – Z4, Robust and rounded with deep blue sizable August berries. Tolerates part shade. Mature 6-7 t x 6-7' w
Jersey - Z4, Late season small to medium-sized, sweet dark blue fruit. Mature 6-7' t x 6-7' w.
Known for their fruit's taste and nutritional value, blueberry bushes are great rain garden plants, a pollinator and food source for birds and bees, and finish with fiery-red fall color. Plants need acidic soils with pH of 4.5 to 4.8.
- 41 Seascape Everbearing Strawberries** S, Z4 Spread 24" x 36", Fruit late summer and fall.
A highly successful everbearing plant for northeastern growers for summer and fall. Large firm berries considered to have the best flavor of any of the everbearers. Self-pollinating. Planting instructions included.
- 42 Nova and Joan C Red Raspberries** S, Z 4, Five plants will fill a 10-foot row
This award-winning combo of 5 mid-summer and 5 late-season winter-hardy bushes will extend your eating enjoyment. Nova is highly productive, producing firm bright berries with rich, intense flavor. Joan C is a fall-bearing, high yielding, thornless plant with large, easy-to-pick red berries great for freezing.
- 43 Millenium Asparagus** S, Z3, Bundle of 25 one-year-old plants. Plant 18-24" apart.
Superior all-around performer with high quality spears, tender, and with good flavor. Successful in a wide range of soil types. An asparagus patch is a long term investment that will continue to yield abundantly for 20 years or more if given proper planting and care. Soil testing is encouraged.

HOW TO TEST YOUR SOIL

The UConn Soil Nutrient Analysis Lab provides soil testing for the home gardener. It's simple and only \$12 for a standard nutrient analysis. The standard nutrient analysis is appropriate for lawns, flowers, vegetables, woody shrubs, fruit trees, agronomic and nursery crops (like Christmas trees) grown in mineral soil. Visit www.soiltest.uconn.edu or call 860-486-4274 for information on how to collect and send samples for testing.

GROUNDCOVERS

- 44 **Christmas Wintergreen** N, PSh, Sh Z3, Mature 3-6" t x 6-12' w'
An attractive, dense, hardy evergreen groundcover that saves its best show for fall and winter. Fall red-tinged, dark green foliage combines with an outstanding display of large red persistent berries that provide a winter food source for wildlife such as pheasant, grouse, and squirrels. Dried leaves can be used to make tea. Tolerates deep shade.
- 45 **Massachusetts Kinnikinnick** N, P, S, PSh, Z3, Mature 6-12" t with a 4-6' spread
This native cultivar groundcover does best in poor, sandy soil. No more than 12" high, its small, lustrous green foliage hugs its branches, providing wildlife food and shelter. Native bees are attracted to its small, showy pink flowers, and birds, small critters and even bears are attracted to its ample supply of late-summer-to-fall berries.
- 46 **Allegheny Spurge** *Pachysandra procumbens* N, PSh, Sh, Z4, Mature 2-4" tall and widely spreading
A native evergreen that possesses groundcover qualities as it slowly forms sizeable colonies of stems with whorled deep green 2-4" long mottled leaves. Flowers appear at the tips of stems above the foliage in early April forming 2" tall spikes of small, white, very fragrant flowers that native insects flock to. Mottled green foliage takes on a bluish cast in fall. Shade-loving, likes moist wet well-drained soils and attracts creatures with the shade it provides.
- 47 **Japanese Pachysandra** *Pachysandra terminalis* PSh, Sh, Z3, Mature 6-8" tall and widely spreading
12 x 14" flat of 100 well-rooted plants. Groundcover for deep shade Avoid sites exposed to full sun and wind. Clear weeds and prepare soil before planting. (PRE-SALE ONLY)
- 48 **Yellowroot** N, RG, P, S, PSh, Z3, Mature -3' t x 2-4' w
A native woody groundcover that easily spreads to form a 1 -3' tall dense carpet. Small spring purple flowers produce star-shaped fruits eaten by birds and other small animals. A perfect plant to use as a transition between sun and shade, and wet to dry. Outstanding fall color.

Composting - The New Black Gold!

If every household composted its biodegradable waste, it would reduce the carbon equivalent of removing 16.5 million cars from the roads (Project Drawdown). Approximately 25 percent of a household's waste is biodegradable in a compost pile. Compost is a beneficial product that improves soil. Considered "food for the soil", compost provides organic waste that feeds billions of microorganisms present in soil allowing them to break down waste into a rich, brown, crumbly material that provides many benefits to soil. Compost increases water-holding capacity while also allowing soil to drain better! Seems counterintuitive, but true.

Compost increases the soil's ability to provide air, water and nutrients to plants growing in it. Compost is easy to make with a little effort by piling as many different plant-based wastes from the kitchen (egg shells are ok, too) with garden waste like weeds, grass clippings and leaves. Be sure not to put grass clippings that were treated with herbicides into your pile. Two basic methods are available to the home composter: hot composting and cold composting.

Hot composting requires more attention to the pile which will need to be turned more often to rotate the materials top to bottom, and side to side. Cold composting is turned less often but takes longer to break down into the finished dark, crumbly material ready for the garden. For Detailed instructions on building piles for hot or cold compost, and for handling the pile, visit the UConn website: <https://blog.extension.uconn.edu/2014/09/08/the-basics-of-composting/>



Cynthia Rabinowitz, NWCD Executive Director

HABITAT FRIENDLY EVERGREEN SEEDLINGS AND PLUGS

Secrets of Success: Seedlings and plugs are fragile and need to be planted ASAP. Keep your plants COOL and their roots MOIST until planting. Controlling weeds and vigilant, regular watering are essential for a good start.

- 49 Norway Spruce** (*Picea abies*) N, S, Z3, Mature 40-60' t x 25-30' w
A large, pyramidal tree with long, cylindrical cones that hang like ornaments from the weeping branches against dark green foliage. Works well for use as a tall screen or windbreak. Wildlife friendly.
- 50 Colorado Blue Spruce** (*Picea pungens*) S, PSh, Z3, Mature 45-60' x 20-26' w
A long-lived specimen tree that displays its unique silvery, green-blue color year-round. Winter-hardy and withstands wind better than most spruces due to a wide-spreading and moderately deep root system. Provides food and shelter for siskins, nuthatches and crossbills.
- 51 Concolor Fir** (*Abies concolor*) S, Z4, Mature 30-50' t x 20-30' w
A popular Christmas tree choice, this pyramidal shaped White fir features bluish to silvery green needles and oblong cones that start out olive green, turning purplish and then brown at maturity. Tolerates heat and winter cold. Grouse like to eat the buds and needles and find it a good roosting tree. The seeds are eaten by squirrels, rodents, chickadees, and crossbills.
- 52 Eastern Red Cedar** (*Juniperus virginiana*) N, RG, P, S, Z-4, Mature 25-30' t x 10-12' w
An upright, tough native evergreen providing year round habitat for over 80 bird species. Tolerates many soil types and conditions including salt and air pollution. Silvery blue to dark green fragrant foliage during the growing season

RAIN GARDENS - CLEANING RUN-OFF ONE YARD AT A TIME



After the successful completion of two demonstration rain gardens in Bethlehem and Watertown in 2019 (check out Current Projects on nwcd.org), NWCD is continuing our campaign in 2020 to build resilient local communities through Low Impact Development (LID). Through a second year of funding for this initiative from the Connecticut Community Foundation, NWCD is designing and building a functional demonstration rain garden with signage in Roxbury and Woodbury.

Rain gardens are a simple and attractive solution for stormwater runoff from lawns, footing and roof drains, driveway and parking lot drains. Rain gardens are the most common type of LID system used to clean up polluted stormwater runoff created in urban and residential areas. They also provide an opportunity to add habitat for birds, pollinators and other wildlife year-round.

LID has been endorsed in a statewide initiative, SustainableCT (<https://sustainablect.org>), to address resiliency and climate adaption in the natural and built environment. Roxbury and Woodbury, both SustainableCT towns, will use their respective demonstration rain garden towards their SustainableCT Silver certification! Building resiliency in our towns is a priority to protect and cultivate sustainable growth.



The Northwest Conservation District
1185 New Litchfield St.
Torrington, CT 06790
Phone (860) 626-7222
www.nwcd.org



The Northwest Conservation District (NWCD) is a local environmental non-profit 501c(3) organization, serving the towns of Barkhamsted, Bethel, Bethlehem, Bridgewater, Brookfield, Canaan (Falls Village), Colebrook, Cornwall, Danbury, Goshen, Hartland, Harwinton, Kent, Litchfield, Morris, New Fairfield, New Hartford, New Milford, Newtown, Norfolk, North Canaan, Plymouth, Roxbury, Salisbury, Sharon, Sherman, Southbury, Thomaston, Torrington, Warren, Washington, Watertown, Winchester and Woodbury.

Board of Directors:

Larry Rousseau, Torrington, Chairman
Ray Furse, Warren, Vice Chair
Sharon Tingley, Sharon, Secretary
Doreen Lynch-Sudol, Morris, Treasurer
Curtis S. Read, Bridgewater
Tara Jo Holmberg, Winsted
Dan McGuinness, Torrington
Bob Rush, New Milford
Michael Sconyers, Norfolk
Rusty Warner, New Hartford
Leya Edison, Goshen, Alternate
Marrisa Wright, Goshen, Alternate

District Staff:

Cynthia Rabinowitz, *Executive Director*
Karen Griswold Nelson, *Programs*
Jean Cronauer, *Development*
Kelsey Sudol, *Environmental Associate*

2020 Spring Trout Stocking Sale - Adult Rainbow & Brown Trout Order Deadline - March 27

Trout play an important role in balancing a healthy stream, pond or lake ecosystem. As a top predator, trout control and stabilize aquatic ecosystems, which is why populating your local areas with trout can be so helpful!



Stock your pond with 9-to-11" Connecticut raised trout, which are rewarding to feed, observe, catch and release, or enjoy as delicious fresh fish. We will obtain all DEEP liberation permits for you and provide order confirmation.

The **minimum order** of 50 fish is \$340 with a \$50 delivery charge. You can also purchase 25 additional fish for \$160. Delivery date is April 11th, with the specific time set by the hatchery. **Call 860-626-7222 or email karengnelson@nwcd.org for more information.**

Bargain Home Energy Audits are Back

Starting March 1, the popular home energy audit known as HES (Home Energy Solutions) will again be available for a co-pay amount of only \$75, regardless of your home-heating fuel. It will be available only for a limited time at this price, so schedule your HES audit now by calling 877-947-3873.

NWCD participates in Give Local, an online 36-hr give-a-thon, hosted by the Connecticut Community Foundation.

NWCD is asking for your help to address stormwater runoff! By 2024, our goal is to have a demonstration rain garden in each of our 34 towns. All donations via **Give Local** will be boosted by bonus funds provided by **Connecticut Community Foundation** and **Give Local** sponsors!



Northwest Conservation District
1185 New Litchfield Street
Torrington, CT 06790

Non-Profit Org
US Postage Paid



Earth Day Plant Sale Order Form inside

Order by mail or visit our online store at nwcd.org
GO GREEN! For ONLY electronic communications, request at
info@nwcd.org.

2020 SPRING CONSERVATION CALENDAR

March

- 16** CT Master Gardener Symposium, Connecticut College, Brozier-Williams Building, register at www.ctmaga.org
- 20** Spring Toast to Conservation - Weantinoge Land Trust, wine and cheese toast to conservation and to learn about the plans for 2020. For more info, visit weantinoge.org
- 23** Connecticut Compost Conference, 8:30-5PM, check out ctrcd.org for more!
- 27** Spring Adult Trout Stocking Order Deadline. See inside back cover for order details

April

- 11** NWCD Spring Trout Delivery
- 15** Plant Order Deadline for our NWCD EARTH DAY PLANT SALE
- 21-22** Give Local Greater Waterbury & Litchfield Hills - donate to NWCD or many other amazing non-profits at www.givelocalccf.org
- 22** 50th Anniversary of Earth Day!
- 24-26** NWCD EARTH DAY PLANT SALE
Goshen Fairgrounds, 116 Old Middle St., Route 63, Goshen
Earth Day Plant Sale Order Form inside or order online at nwcd.org



May

- 2** Woodbury Earth Day, 11AM - 4PM, Hollow Park, Free admission, \$5 parking, check out more on <https://www.woodburyearthday.org>