



April 21, 22 and 23, 2017

Friday 9-6, Saturday 9-4, and Sunday 10-3

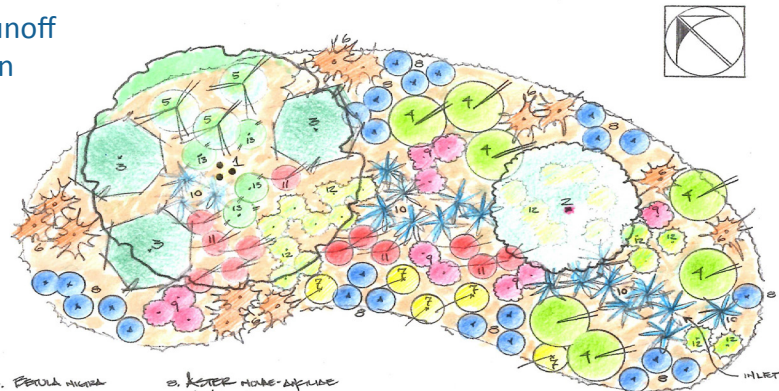
Goshen Fairgrounds - 116 Old Middle Street - Route 63

Order Form inside or Visit our Online Store at nwcd.org

Rain gardens -- Cleaning up runoff one yard at a time



Rain gardens are a simple and attractive solution for runoff from footing and roof drains, driveway drains, and even from lawns laden with pesticides and fertilizer. Rain gardens work best in well-drained soils and are the most common type of Low Impact Development (LID) system used to clean up polluted storm-water runoff created in residential areas. They also provide an opportunity to add habitat for birds, butterflies and other wildlife year-round. At NWCD, we are working in cooperation with our district towns to implement a new initiative to require the use of rain gardens and other LID measures in all proposed projects requiring municipal permits. To date, we are working with Morris, Washington, Warren and Woodbury and lake protection organizations to create a model LID Design Manual to make it simple for the design/build community to incorporate LID into their plans, and to make it easy for town commissions to understand if a project is being protective of wetland and open water resources.



- | | |
|--------------------------|------------------------|
| 1. BERULA NIGRA | 9. LISTER MONA-MERLINO |
| 2. CORNUS STOLONIFERA | 10. MONARDA FURINA |
| 3. CISTACEA DUNTOBIANA | 11. IREX VEVENSIS |
| 4. RANUNCULUS ACUTIFIDUS | 12. GEORGINA BAKER |
| 5. CHEIRY ANTHUS | 13. CHELONE GLABRA |
| 6. ACER RUFINUM | |
| 7. SCILLA MARITIMA | |

RAIN GARDEN #2
 FULL SUN EXPOSURE
 SCALE 3/8" = 1'0"
 FEBRUARY 2017 SHEET #A
 RRR

Graphics by Richard Rosiello
 NYBG Certified Landscape Designer
 APLD National Board Member
 President Mad Gardeners (2016-2017)

A GUIDE TO OUR PLANT SALE

EARTH DAY SALE PLANTS, including shrubs, trees, edibles, groundcovers, grasses, and evergreen seedlings and plugs CAN BE PREORDERED using the enclosed order form or online at nwcd.org. Preorder customers will be invited to our early opening on Thursday afternoon for the best selection of perennials and other day-of-sale shrubs, trees, edibles and groundcovers. All preorders are carefully assembled and ready for pickup during the sale. Preorder confirmations complete with directions to the Goshen Fairgrounds will be mailed mid-April. If you are looking for a plant not on our order form, just call or email us before April 7th.



PERENNIALS AND DAY-OF-SALE PLANTS. At our three-day sale, you will find over 3,500 perennials, both native, natives and non-native, carefully chosen for use in all types of settings, from pollinator and bird gardens to rain and rock gardens. Perennials CANNOT BE PREORDERED, so come early for the best selection. A complete perennial list will be available on our website in early April and will include plant height and width, color and bloom time, and the best place to plant. Other day-of-sale plants include Pinxterbloom Azalea, Blue Berry Delight Juniper, Copper Low Bush Honeysuckle, Inspired Pink Buddleia, Pink Charm Mountain Laurel, Coast Leucothoe, Flowering Almond, 'Sugar Tip' Rose of Sharon, Haas Halo Smooth Hydrangea, Double Pink Knock Out and Miracle on the Hudson roses, Native Pussy Willow, Japanese umbrella pine, Dawn Redwood, assorted semi-dwarf fruit trees, Rhubarb crowns, Goji Berries, seedless Concord grapes, and various groundcovers and grasses.

PLANT DESCRIPTIONS - A GUIDE TO CHOOSING YOUR PLANTS. Our plant sale selections, listed in order by Latin name, include many important native species and no non-native invasives. Our plant descriptions contain mature size and width and information as to where best to grow plants, in sun, part shade or shade, and USDA Gardening Zones. In addition, information is supplied regarding their use as rain garden, pollinator- or habitat-friendly selections, bloom times and unique attributes. Helpful websites for more in-depth information and identification include Missouri Botanical's Plant Finder at www.missouribotanicalgarden.org/plantfinder, New England Wildflower Society's "Go Botany" database, www.gobotany.newenglandwild.org, Lady Bird Johnson's Native Plant Information Center at www.wildflower.org and www.abnativeplants.com.

HOW TO TEST YOUR SOIL. The UConn Soil Nutrient Analysis Lab provides soil testing for the home gardener. It's simple and only \$12 for a standard nutrient analysis. The standard nutrient analysis is appropriate for lawns, flowers, vegetables, woody shrubs, fruit trees, agronomic and nursery crops (like Christmas trees) grown in mineral soil. Visit www.soiltest.uconn.edu or call 860-486-4274 for information on how to collect and send samples for testing.

PLEASE JOIN US AS A VOLUNTEER! Our entire plant sale event, from set-up to break-down, is manned by many wonderful gardening enthusiasts, master gardeners and helpful NWCD staff. If you are interested in volunteering for any of the jobs available, from unloading trucks to manning the floor and meeting and welcoming other fellow gardeners, please sign up on the order form, send an email (karengnelson@conservect.org) or call us at 860-626-7222.

WELCOME SOUTHWEST CONSERVATION DISTRICT PLANT SALE CUSTOMERS. As you may know, the State of Connecticut has had to significantly tighten its budget. After years of maintaining a line item in the state budget for local conservation districts, the 2016-2017 budget eliminated all funding for five local conservation districts, including the Northwest Conservation District. During this time of uncertainty, our sister district, Southwest Conservation District, will not be able to run their scheduled 2017 Plant Sale. Standing united to deliver technical assistance and education to municipalities and landowners, the Northwest and Connecticut Coastal Conservation Districts are partnering to provide a temporary home for Southwest Conservation District's plant sale customers. Both NWCD staff and Connecticut River Coastal's staff look forward to your continued support of our districts as we work together to provide our time-proven invaluable services for Connecticut's natural environment. Please go to <http://www.conservect.org/ctrivercoastal/PlantSale/tabid/321/Default.aspx> for Connecticut River Coastal Conservation District plant sale selections for their April 28-30 sale at the Tanger Outlets in Westbrook, CT.

Northwest Conservation District ncd@conservect.org

35th Annual Earth Day Plant Sale * Order Deadline Friday, April 7, 2017

Pick up at Goshen Fairgrounds on Friday, Saturday or Sunday, April 21st, 22nd and 23rd

Name _____ Phone _____

Address _____ Town _____ State _____ Zip _____

Email _____

Mail this order form or place your order online at www.nwcd.org

NATIVE AND ORNAMENTAL SHRUBS

Gallon size Price How many Total

			Gallon size	Price	How many	Total
1	Sweet Emotion Abelia	<i>Abelia mosanensis</i> 'Sweet Emotion'	2	\$35		
2	Autumn Brilliance Shadblow	<i>Amelanchier grandiflora</i> 'Autumn Brilliance'	3	\$42		
3	Red Chokeberry	<i>Aronia arbutifolia</i> 'Brilliantissima'	3	\$39		
4	Black Chokeberry	<i>Aronia melanocarpa</i> 'Iroquois Beauty'	3	\$39		
5	Lemon Drop Swamp Azalea	<i>Azalea viscosum</i> 'Lemon Drop'	2	\$35		
6	Venus Sweetshrub	<i>Calycanthus floridus</i> 'Venus'	3	\$39		
7	Magical Moonlight Button Bush	<i>Cephalanthus</i> 'Magical Moonlight'	3	\$37		
8	Sugartina Summersweet	<i>Clethra</i> 'Sugartina Crystalina'	2	\$32		
9	Gray Twig Dogwood	<i>Cornus racemosa</i>	3	\$39		
10	Cardinal Red Twig Dogwood	<i>Cornus sericea</i> 'Cardinal'	3	\$41		
11	Red-vein Enkianthus	<i>Enkianthus campanulatus</i>	2	\$32		
12	Berried Treasure Box Huckleberry	<i>Gaylussacia brachycera</i> 'Berried Treasure'	1	\$21		
13	Vernal Witch-hazel	<i>Hamamelis vernalis</i>	3	\$35		
14	Lady in Red Lacecap Hydrangea	<i>Hydrangea macrophylla</i> 'Lady in Red'	3	\$45		
15	Alice Oakleaf Hydrangea	<i>Hydrangea quercifolia</i> 'Alice'	3	\$45		
16	Sunny Boulevard St. John's Wort	<i>Hypericum kalmianum</i> 'Sunny Boulevard'	2	\$30		
17	Densa Inkberry	<i>Ilex glabra</i> 'Densa'	3	\$44		
18	Wildfire Winterberry	<i>Ilex verticillata</i> 'Wildfire'	3	\$42		
19	Raspberry Glow Mountain Laurel	<i>Kalmia latifolia</i> 'Raspberry Glow'	2	\$37		
20	Northern Spicebush	<i>Lindera benzoin</i>	2	\$29		
21	Major Wheeler Honeysuckle	<i>Lonicera sempervirens</i> 'Major Wheeler'	1	\$22		
22	Russian Cypress	<i>Microbiota decussata</i>	2	\$35		
23	Dakota Sunspot Cinquefoil	<i>Potentilla fruticosa</i> 'Dakota Sunspot'	3	\$35		
24	Roseum Rhododendron	<i>Rhododendron maximum</i> 'Roseum'	2	\$33		
25	Gro-low Fragrant Sumac	<i>Rhus aromatica</i> 'Gro-low'	3	\$45		
26	Adams Elderberry	<i>Sambucus canadensis</i> 'Adams'	3	\$35		
27	Blackhaw Viburnum	<i>Viburnum prunifolium</i>	3	\$42		
28	Pollinator Garden-In-A-Box	Collection of 16 shrubs and perennials.	NEW	\$50		

NATIVE AND ORNAMENTAL TREES				Size/Count	Price	How many	Total
29	Red Sunset Red Maple	<i>Acer rubrum</i> 'Red Sunset'		7 gallon	\$98		
30	Paw Paw	<i>Asimina triloba</i>		3 gallon	\$52		
31	Milky Way Dogwood	<i>Cornus kousa</i> 'Milky Way'		7 gallon	\$98		
32	Arboretum Eastern Red Cedar	<i>Juniperus virginiana</i> 'Arboretum'		3 gallon	\$53		
33	Japanese Stewartia	<i>Stewartia pseudocamellia</i>		7 gallon	\$98		
HOME GARDEN FRUIT TREES, BERRIES AND EDIBLES							
34	Empire Apple Tree	<i>Malus domestica</i> 'Empire'		7 gallon	\$55		
35	Ginger Gold Apple Tree	<i>Malus domestica</i> 'Ginger Gold'		7 gallon	\$55		
36	Montmorency Cherry Tree	<i>Prunus cerasus</i> 'Montmorency'		7 gallon	\$55		
37	Tomcot Apricot Tree	<i>Prunus armeniaca</i> 'Tomcot'		7 gallon	\$55		
38	Red Haven Peach Tree	<i>Prunus persica</i> 'Red Haven'		7 gallon	\$55		
39	Bartlett Pear Tree	<i>Pyrus communis</i> 'Bartlett'		7 gallon	\$55		
40	Patriot, Bluecrop & Jersey Blueberries	<i>Vaccinium</i> - Set of 3 potted bushes - 1 early-, 1 mid- and 1 late-season		2 gallon	\$58		
41	Blue Bird Honeyberries	<i>Lonicera caerulea</i> "Blue Bird"		2 gallon	\$42		
42	Honeoye Strawberries	25 bare-root plants		25 rts	\$15		
43	Nova and Heritage Red Raspberries	5 early- and 5 late-season canes		10 cns	\$30		
44	Millennium Asparagus	25 bare-root plants		25 rts	\$26		
GROUNDCOVERS AND GRASSES							
45	Massachusetts Kinnikinnick	<i>Arctostaphylos uva-ursi</i> 'Massachusetts'		1 gallon	\$20		
46	Blonde Ambition Blue Grama Grass	<i>Bouteloua gracilis</i> 'Blonde Ambition'		2 gallon	\$19		
47	Pachysandra Groundcover	Flat with 100 well-rooted plants		100 rts	\$30		
48	Periwinkle Groundcover	Huge bundle of 100 bare-root plants		100 rts	\$60		
EVERGREEN SEEDLINGS AND PLUGS							
49	White Spruce <i>Picea glauca</i>	25 seedlings	3-year seedlings 8-16 inches		\$30		
50	Colorado Blue Spruce <i>Picea pungens</i>	25 seedlings	3-year seedlings 8-16 inches		\$30		
51	Balsam Fir <i>Abies balsamea</i>	1 plug	1-year plug 6-12 inches		\$3		
52	Norway Spruce <i>Picea abies</i>	1 plug	2-year plug 12-18 inches		\$3		
Volunteers needed!						Total	
<p>Be part of the area's largest Earth Day celebration. Join other gardeners and volunteers to support local conservation.</p> <p>Many jobs available from Monday, April 17 through Sunday, April 23</p> <p>YES, I can help for a couple of hours. The best day/time for me is: or contact karengnelson@conservect.org</p>							
<p>Order early for best selection.</p> <p>Mail to NCD 1185 New Litchfield Street Torrington, CT 06790 Checks to NCD, no sales tax</p>							

N=Native/nativar RG=Rain garden P=Pollinator S=Sun PSh=Part Shade Sh=Shade Z=Zone

NATIVE AND ORNAMENTAL SHRUBS

- 1 Sweet Emotion Abelia** P, S, PSh, Z4, Mature 5-8' t x 5-6' w
Winter hardy to Zone 4, this new **Proven Winner** emerges in spring with white and pink jasmine-scented blooms, followed by striking seed heads and orange fall foliage. Attractive to butterflies, low maintenance and deer resistant.
- 2 Autumn Brilliance Shadblow** N, RG, S, PSh, Z4, Mature 20-25' t x 18-20' w
A vigorous, disease-resistant, multi-stemmed nativar with white, fragrant, April blooms followed by bird-attracting fruit suitable for jams and jellies. Bronze-tinged spring foliage, brilliant orange-red fall color and great winter bark.
- 3 Red Chokeberry** N, RG, P, S, PSh, Z3, Mature 6-10' t x 3-5' w
This versatile buffer/rain garden nativar tolerates wet soils and offers dark, shiny foliage with profuse white flowers in May, providing nectar for native bees. Brilliant red, persistent berries are a delicacy for many of our prized bird species.
- 4 Black Chokeberry** N, RG, P, S, PSh, Z3, Mature 2-3' t x 3-4' w
Showy fragrant May blooms, attractive to pollinators, are followed by dark purple/black berries enjoyed by birds and humans. Multi-stemmed and compact, this easy-to-grow nativar provides deep-red fall color and is deer resistant.
- 5 Lemon Drop Swamp Azalea** N, RG, P, S, PSh, Z4, Mature 5-7' t x 6-8' w
An upright nativar perfect for bogs and water's edge. Peach flower buds open in July to pastel-yellow, lemon-scented blooms followed by red fall foliage and red-brown winter stems. Attracts hummingbirds, butterflies and songbirds.
- 6 Venus Sweetshrub** S, PSh, Z5, Mature 8-10' t x 6-8' w
Magnolia-like white blooms adorn 'Venus' from late May through late July. Glossy green foliage serves as a backdrop to their scent of strawberries and ripe melons with spicy undertones. All season showy with deep-golden fall color.
- 7 Magical Moonlight Buttonbush** N, RG, P, PSh, Sh, Z5, Mature 5-8' t x 4-6' w
A new compact **Proven Winner** nativar for small garden spaces. Tiny, white, fragrant spring blooms are a nectar source for hummingbirds, butterflies and bees. Large round summer fruits attract songbirds. Tolerates wet soils.
- 8 Sugartina Summersweet** N, RG, P, Sh, Sh, Z4, Mature 2-3' t x 3-4' w
A shade-loving dwarf **Proven Winner** nativar perfect for woodland gardens. Fragrant white flower spikes in late summer attract native butterflies and bees. Dark-green glossy foliage and yellow fall foliage. Tolerates wet soils.
- 9 Gray Twig Dogwood** N, RG, P, S, PSh, Z3, Mature 6-8' t x 10-12' w
A disease-free native landscape pioneer with white panicle June flowers attractive to birds and butterflies followed by fall white berries that birds love. Dusky red-purple fall color and red-pink fruit stems for winter interest.
- 10 Cardinal Red Twig Dogwood** N, RG, P, S, PSh, Z3, Mature 6-8' t x 9-10' w
This fast-growing native cultivar boasts clusters of May-to-July flowers, followed by late-summer, blue-blushed berries - a delicacy and food source for native birds. Reddish-purple fall foliage, winter hardy with attractive red stems.
- 11 Red-vein Enkianthus** P, S, PSh, Z4, Mature 6-8' t x 5-6' w
Upright, deciduous shrub with pollinator-attracting, drooping, bell-shaped, reddish-tinged white flowers in late spring. Green foliage turns vivid scarlet in autumn. A carefree landscape addition in borders with other acid loving plants.
- 12 Berried Treasure Box Huckleberry** N, P, S, PSh, Z3, Mature 6-18" t x 3-5' w
Vigorous, low-growing nativar shrub with year-round interest. Spring bell-shaped whitish-pink flowers attractive to butterflies and pollinators are followed by blueberry-like edible fruit. Glossy green foliage and deep-red fall color.
- 13 Vernal Witch-hazel** N, RG, S, PSh, Z4, Mature 8-10' t x 10-12' w
A tough adaptable native with fragrant yellow flowers in late winter, summer bird nesting sites and yellow fall foliage.
- 14 Lady in Red Lacecap Hydrangea** PSh, Z5, Mature 3-4' t x 3-4' w
An ever-changing lacecap selection with 3-4" blooms with a hint of pink against heavily toothed, deep green foliage with red central veins and red stems. Blooms and foliage turn a stunning burgundy red in fall. An all-season delight.

N=Native or nativar, RG= Rain Garden P=Pollinator S=Sun PSh=Part Shade Sh=Shade Z=Zone

- 15 Alice Oakleaf Hydrangea** N, P, PSh, Z5, Mature 6-8' t x 6-8' w
An easy-care nativar with huge July flowers with arching cones of white blooms. Disease-resistant foliage turns scarlet and burgundy in fall with rich copper-brown exfoliating bark, all providing shelter for nesting and critter cover.
- 16 Sunny Boulevard St. John's Wort** N, P, S, PSh, Z5, Mature 2-3' t x 2-3' w
A drought-resistant compact nativar sporting deep-green willow-like leaves as a perfect backdrop for small, yellow, daffodil-like flowers from July until September. Fruit sets after flowering, offering autumn and winter interest.
- 17 Densa Inkberry** N, RG, P, PSh, Sh, Z5, Mature 3-4' t x 4-5' w
Tough, evergreen nativar buffer/pollinator plant provides year-round cover and black berries for our native birds.
- 18 Wildfire Winterberry** N, RG, S, PSh, Sh, Z4, Mature 6-7' t x 7-8' w
A compact, rounded-shape nativar with pure white flowers, dark-green deciduous foliage and large, bright-red fruit to attract songbirds to your fall and winter gardenscape. Male "Southern Gentleman" pollinators available day of sale.
- 19 Raspberry Glow Mountain Laurel** N, PSh, Sh, Z5, Mature 8-10' t x 6-10' w
Showy raspberry-pink blooms in late May. Dense, vigorous and shade tolerant. Connecticut state flower cultivar.
- 20 Northern Spicebush** N, RG, P, S, PSh, Z4, Mature 6-10' t x 6-10' w
Oval, upright native buffer plant with early-April yellow blooms providing early-season nectar to bees and butterflies. Host plant to Spicebush Swallowtail butterfly. Foliage and stems are aromatic when crushed. Fall brings important red berries for birds and showy yellow foliage.
- 21 Major Wheeler Honeysuckle** N, P, S, PSh, Z4, Mature 20-30' t x 20-30' w
Masses of long, tubular, bright-red trumpet flowers provide neighborhood hummingbirds and butterflies a great source of flower fragrance and nectar late May through summer. Dark green, lustrous and mildew-free foliage.
- 22 Russian Cypress** S, Z2, Mature 10-12" t x 8-10' w
A hardy evergreen conifer groundcover with soft, feathery, touchable foliage. Does great in sun or shade, is drought tolerant and deer resistant. Fruits are tiny, spherical, berry-like cones amidst striking bronze fall colors.
- 23 Dakota Sunspot Cinquefoil** S, PSh, Z3, Mature 3-4' t x 3-4' w
A compact, cold-hardy shrubby potentilla with tightly packed flower buds opening to a deluge of 1"-diameter, single, bright-yellow flowers from late May through the summer. Tolerates dry, urban, poor soil.
- 24 Roseum Rhododendron** N, PSh, Sh, Z4, Mature 8-12' t x 8-12' w
A spectacular nativar with huge lavender-pink flowers late June into early July. Long deep-green foliage and wide open branches perfect for grouping in wooded areas. Other color, size and bloom time rhodos available day of sale.
- 25 Gro-low Fragrant Sumac** P, S, PSh, Z4, Mature 1-2' t x 5-6' w
Non-poisonous groundcover with fragrant April yellow flowers. Flowers provide a nectar source for adult butterflies followed by red berries for birds. Stunning red and orange fall color. Drought tolerant and great for erosion control.
- 26 Adams Elderberry** N, RG, P, PSh, Z5, Mature 8-10' t x 8-10' w
A great nativar with a dense round form, deep-green foliage and profuse flattened heads of June-blooming, creamy-white flowers that butterflies dream about and visit in hordes. Birds and small mammals find its dark-blue berries to be a favorite food source and its bulky form ideal for providing essential cover. A great habitat and rain garden plant.
- 27 Blackhaw Viburnum** N, RG, P, S, PSh, Z3, Mature 10-12' t x 12-14' w
Upright and hardy, this time-tested native offers mid-May fragrant, creamy-white flowers to attract butterflies and pollinators, nesting sites and cover for birds, and red-purple fall foliage with blue-black songbird fruit in the fall.
- 28 POLLINATOR GARDEN-IN-A-BOX - Native pollinator collection - Planting information included.**
Handmade reusable native-pine box sized to hold 4 shrubs in a 1 qt.- size pot and 12 perennials in a plug starter size. Designed to attract and sustain pollinators. Included are plant descriptions and theme-specific information.

N=Native or nativar, RG= Rain Garden P=Pollinator S=Sun PSh=Part Shade Sh=Shade Z=Zone

NATIVE AND ORNAMENTAL TREES

- 29 Red Sunset Red Maple** N, P, S, PSh, Z4, Mature 45-50' t x 35-40' w
A stately pyramidal nativar with small winter/spring flowers, red-hued leaf stems and winged summer fruit against bright-green, textured summer foliage. Great shade tree attractive to songbirds, with stunning fiery-red fall color.
- 30 Paw Paw** N, P, S, PSh, Z5, Mature 20-25' t x 20-25' w
A native understory tree with deep brownish-purple flowers from April to May followed by long, tapered green leaves and food source for the Zebra Swallowtail caterpillar. Yellow to green fruit in fall if pollinator provided.
- 31 Milky Way Dogwood** S, Z5, Mature 20-25' t x 20-25' w
Multi-stemmed specimen that provides a "galactic" array of white blooms followed by a star-studded show of bright-red, bird-edible fruit. A stellar beacon in the fall landscape with the help of a scintillating purple-red fall foliage display.
- 32 Arboretum Eastern Red Cedar** N, P, S, Z4, Mature 25-30' t x 10-12' w
An upright evergreen nativar providing year-round cover and nesting sites for many birds, including Cedar Waxwings, and fall fruit for over 80 bird species. Dark-green, fragrant foliage and host plant for Olive Hairstreak butterfly.
- 33 Japanese Stewartia** S, Psh, Z5, Mature 20-25' t x 10-15' w
An easy-to-grow, pest-free, Cary Award-winning tree with camellia-like July blooms with white petals and orange centers. Fresh green summer leaves followed by reddish-purple fall color and glimpses of multi-colored exfoliating bark.

HOME GARDEN FRUIT TREES, BERRIES AND EDIBLES

- 34 Empire Apple Tree** Semi-dwarf, S, Z4 Mature 12-15' t x 12-15' w
A cross between a 'McIntosh' and 'Red Delicious,' resulting in a crisp, medium-sized apple with dark, red-blushed skin and cream flesh. Sweet with a slightly tart flavor, good for fresh eating or storage. Bountiful mid-September harvest.
- 35 Ginger Gold Apple Tree** Semi-dwarf, S, Z5, Mature 12-15' t x 12-15' w
One of the best-tasting early fall apples with golden-yellow russeted skin and tangy and sweet flavor. Stays crisp for months if refrigerated. Pollinators include Empire, Honeycrisp (available day of sale) or white flowering crabapples.
- 36 Montmorency Cherry Tree** Semi-dwarf, S, Z5, Mature 15-20' t x 15-20' w
Vigorous and self-fruitful, this well-known sour-cherry tree starts with a heavy spring bloom of small white, fragrant flowers. Sizable, tangy, bright-red fruit, perfect for pies and baked goods, is ready for picking in July and August.
- 37 Tomcot Apricot Tree** Semi-dwarf, S, Z5, Mature 15-20' t x 15-20' w
Pink blooms adorn this vigorous and partially self-pollinating tree in late April followed by early-maturing, late-July and early-August yellow ruby-blushed fruit. Tasty fresh or preserved, and especially good as a dessert addition.
- 38 Red Haven Peach Tree** Semi-dwarf, S, Z5, Mature 15-20' t x 15-20' w
Heavy-bearing, well-formed vigorous tree with medium-sized, round fruit in late July. Firm, creamy-textured yellow flesh under an almost fuzzless, red and golden skin. Cold and disease resistant, and self-fertile - a home garden must.
- 39 Bartlett Pear Tree** Semi-dwarf, S, Z5, Mature 15-20' t x 10-20' w
Vigorous and productive, America's favorite pear tree leads off with showy spring white blooms. Large golden-yellow fruit with a buttery, juicy taste, favorite for fresh eating, canning and preserves, is ready for picking in late September.
- 40 Blueberries** Set of three 2-gallon potted blueberry bushes
Patriot - Z3, best early-season producer with massive yields in a dense, rounded package. Mature 4-5' t x 4-5' w.
BlueCrop - Z4, mid-season with large and great-tasting fruit. Mature 5-6' t x 5-6' w.
Jersey - Z4, late-season with dark-blue, medium-sized berries in a tall, well-shaped habit. Mature 6-8' t x 5-7' w.
Known for their fruit's taste and nutritional value, blueberry bushes are great rain garden plants, a pollinator and food source for birds and bees, and finish with fiery-red fall color. Plants need acidic soils with pH of 4.5 to 4.8.

N=Native or nativar, RG= Rain Garden P=Pollinator S=Sun PSh=Part Shade Sh=Shade Z=Zone

- 41 Blue Bird Honeyberries** S, Z2, Mature 5-6' t x 4-5' w
An upright, vigorous shrub offering small, white flower blooms along its branches in April, followed by oodles of dark-blue, oblong, almost blueberry-tasting berries that mature in June. Fruit is perfect for fresh eating by the handful.
- 42 Honeoye Strawberries** S, Z3 Recommended for beginners and home gardeners
Vigorous hybrid combining winter hardiness, high productivity, good appearance and color, with excellent flavor.
- 43 Nova and Heritage Red Raspberries** S, Z 3/4, Five plants will fill a 10-foot row
This award-winning combo of 5 early- and 5 late-season winter-hardy bushes will extend your eating enjoyment. Nova (Zone 3), known for high yield and dependability, produces large-to-medium, firm berries with good shelf life. Heritage (Zone 4) is considered the standard for production and high-quality fruit. Both great for home gardeners.
- 44 Millennium Asparagus** S, Z3, Bundle of 25 large one-year-old plants. Plant 18-24" apart.
New high-performing variety with outstanding flavor and tenderness. An asparagus patch is a long-term investment that will continue to yield abundantly for 20 or more years if given the proper planting and care. Test and adjust your soil before you plant. Asparagus requires sweet soil with a pH of 7.2. Lime may be needed.

GROUNDCOVERS AND GRASSES

- 45 Massachusetts Kinnikinnick** N, P, S, PSh, Z3, Mature 6-12" t with a 4-6' spread
This native cultivar groundcover does best in poor, sandy soil. No more than 12" high, its small, lustrous green foliage hugs its branches, providing wildlife food and shelter. Native bees are attracted to its small, showy pink flowers, and birds, small critters and even bears are attracted to its ample supply of late-summer-to-fall berries.
- 46 Blonde Ambition Blue Grama Grass** N, P, PSh, S, Z4, Mature 30-36" t x 30-36" w
A unique ornamental grass with flag-like chartreuse flowers appearing in mid-summer. Blooms attract butterflies and birds and are a host plant for skippers. Ground-feeding birds enjoy blonde seed heads in autumn. Resilient stems stay upright even in heavy snow. A deer- and drought-tolerant, extremely cold-hardy year-round garden gem.
- 47 Pachysandra Groundcover** PSh, Sh, Z3, Mature 6-8" tall and widely spreading
12 x 14" flat of 100 well-rooted plants. Best groundcover for deep shade, singularly beautiful. Avoid sites exposed to full sun and wind. Clear weeds and prepare soil before planting. (Native pachysandra available day of sale.)
- 48 Periwinkle Groundcover** S, PSh, Z4, Mature 6-8" t and widely spreading
Huge burlap-wrapped bundle of 100 bare-root plants. Small, shiny evergreen leaves with charming, violet-blue flowers in the spring. Grows well in shade or sun, valuable to cover hard-to-mow banks or under trees. Plant 1' apart. Clear weeds and prepare soil before planting.

EVERGREEN SEEDLINGS AND PLUGS

Secrets of Success: Seedlings and plugs are fragile and need to be planted ASAP. Keep your plants COOL and their roots MOIST until planting. Controlling weeds and vigilant, regular watering are essential for a good start.

- 49 White Spruce** *Picea glauca* N, S, PSh, Z3, Mature 30-60' t x 10-20' w
Hardy all-around pyramidal-shaped tree providing shelter, nesting sites and food for many kinds of wildlife.
- 50 Colorado Blue Spruce** *Picea pungens* N, S, PSh, Z3, Mature 30-60' t x 20-30' w
Year-round, unique silvery, blue-green color. Wind hardy and long lived, proving food and shelter for native birds.
- 51 Balsam Fir** *Abies balsamea* N, S, PSh, Z3, Mature 45-60' t x 20-25' w
Native, popular Christmas tree choice. Dark-green color, long-lasting needles, pleasing fragrance and habitat friendly.
- 52 Norway Spruce** *Picea abies* S, PSh, Z4, Mature 40-60' t x 25-30' w
Fast growing and versatile with dark-green color. Habitat friendly and good roosting tree for hawks and owls.

INVASIVE PLANTS IN YOUR BACKYARD? CONSIDER THESE ALTERNATIVES

NWCD partners with many organizations in Connecticut hard at work preventing the spread of invasive species. Here are a few alternatives for the most common invasive garden plants. For more information, visit, www.ct.gov/deep/invasivespecies and cipwg.uconn.edu/invasive_plant_list.

INVASIVE

ALTERNATIVE

Burning Bush (<i>Euonymus alatus</i>)	Chokeberry, Gray Dogwood, Highbush Blueberry, Witch-hazel
Japanese Barberry (<i>Berberis thunbergii</i>)	Bayberry, Inkberry, Summersweet, Winterberry
Multiflora Rose (<i>Rosa multiflora</i>)	Chokeberry, Highbush Blueberry, Summersweet, Winterberry
Autumn Olive (<i>Elaeagnus umbellata</i>)	Bayberry, Chokeberry, Inkberry, Winterberry
Tree of Heaven (<i>Ailanthus altissima</i>)	Eastern Redbud, Flowering Dogwood, Shadblow
Oriental Bittersweet (<i>Celastrus orbiculatus</i>).....	Trumpet Honeysuckle, Virgin's Bower, Virginia Creeper
Japanese Knotweed (<i>Polygonum cuspidatum</i>)	Buttonbush, Elderberry, Pussy Willow, Spicebush
Purple Loosestrife (<i>Lythrum salicaria</i>)	Bee Balm, Hyssop, Coneflower, Joe-Pye Weed, Milkweed
Garlic Mustard (<i>Alliaria petiolata</i>)	Creeping Phlox, Foam Flower, Lady Fern, Wild Ginger
Common Reed (<i>Phragmites australis</i>)	Big Bluestem, Broom Sedge, Pussy Willow, Switchgrass

PERENNIALS, COLORFUL, LONG LASTING AND ENDURING..... AND A GREAT WAY TO MAKE YOUR GARDEN HABITAT FRIENDLY

At our sale in April, you will find a selection of over 3,500 perennials, from spring ephemerals to hardy species that bring fall color to fading gardens. Our choices include great native varieties that not only provide nectar sources for butterflies and other pollinators, but are a source of food and shelter for birds and beneficial insects and alternatives for habitat-unfriendly invasives. We have added habitat notes to this year's selections as well as some old-fashioned names. Our spring ephemerals include Blood Root, Jack-in-the Pulpit, Marsh Marigold, May Apple, Trilliums, Virginia Bluebells and Zizia. Here are others available at the sale (subject to availability).

- | | | | | |
|------------------------------------------------------------------------------------|------------------------------------------------------------------------------------------------------|-----------------------------------------------------------------------------------------|-----------------------------------------------------------------------------------------------|------------------------------------------------------------------------------|
| • Achillea (Yarrow) | • Astilbe | • Dicentra (Bleeding Heart) | • Iris versicolor | • Penstemon (Beard-tongue for butterflies) |
| • Agastache (Hyssop and loved by hummingbirds) | • Baptisia (Blue False Indigo and pollen and nectar source for native bumblebees) | • Dornicum | • Lavandula (English-Lavender) | • Phlox for butterflies and bees and scent. |
| • Alcea (Hollyhock) | • Bellis (English Daisy) | • Echinacea (Coneflower and loved by birds, bees, and butterflies) | • Leucanthemum (Daisy) | • Physostegia (Obedient Plant) |
| • Alchemilla (Lady's Mantle) | • Bergenia | • Epimedium | • Ligularia | • Polenemonium (Jacob's Ladder) |
| • Allium (Onion) | • Calamintha | • Eupatorium (Joe-Pye Weed and important species for our Monarch Butterfly population.) | • Lobelia (Cardinal Flower and loved by bees, butterflies and birds) | • Rudbeckia (Black Eyed Susan and bee, and bird favorite) |
| • Anemone (wind flowers for fall interest) | • Campanula (Bell-flower) | • Euphorbia (Spurge) | • Wild Blue Lupine (sole food source for the endangered Karner blue butterfly's caterpillar.) | • Salvia |
| • Aquilegia (Columbine and loved by hummingbirds) | • Centaurea | • Lady Fern | • Monarda (Bee Balm for bees and butterflies) | • Sedum (Stonecrop) |
| • Armeria (Sea Thrift) | • Cerastium | • Gaillardia (Blanket Flower) | • Nepeta (Catmint for your feline friends) | • Sisyrrinchium |
| • Aruncus (Goat's Beard) | • Chelone (Turtle-head and a valuable source for Baltimore Checkerspot butterflies and hummingbirds) | • Geranium | • Oenothera (Evening Primrose and evening dwelling spot for native moths and butterflies) | • Tiarella (Foam Flower) |
| • Asarum (Wild and European Ginger) | • Cimicifuga | • Helenium | • Paeonia (old fashioned Peonies to soothe one's soul). | • Verbena (Vervain) |
| • Asclepias (Milkweed and important species for our Monarch Butterfly population.) | • Clematis | • Heliopsis (False Sunflower) | | • Veronica (Speedwell) |
| • Asters (spring and fall bloomers and friends to birds and butterflies) | • Chrysogonum | • Helleborus | | • Vernonia (New York Ironweed and pollen source for insects and butterflies) |
| | • Coreopsis (Tickseed and food source for native bees, butterflies and beetles.) | • Heuchera (Coralbells) | | • Veronicastrum (Culvers Root) |
| | • Dianthus (Grandma's "Pinks") | • Heucherella | | • Viola (everyone's favorite) |
| | | • Hibiscus | | |
| | | • Hosta (loved by hummingbirds) | | |



Native Meadows

In 2010, the Northwest Conservation District (NWCD) purchased a unique 25-acre parcel on the Housatonic River and next to Veteran's Bridge in New Milford. We were awarded a competitive grant from the General Electric Natural Resource Damage Fund. Our proposal asked for both purchase and restoration money to create a town-owned park for passive recreation that would also provide floodplain and aquifer protection.

The NWCD staff has been working to remove invasive plants, restore native trees and shrubs, and establish a trail network. Soon we will be installing a parking area and interpretive signage before handing over the finished Native Meadows Preserve to the Town of New Milford.

People will be able to experience nature and the river through the seasons. Migrating and resident birds will have appropriate cover, and butterflies and bees will feed on pollinator-friendly plants. Other riverine mammals and larger fauna also use the property. In short, Native Meadows will be a park and home for many species.

The site is rich in history because it was the last parcel retained by the Pootatuck tribal people living here at the time of contact with European explorers and settlers. They were a farming, hunting and fishing culture that probably cultivated corn, squash, beans and tobacco on this land. By 1736, the remaining Pootatucks were relocated to the Schaghticoke Reservation in Kent.

The Northwest Conservation District would like to thank our funding agencies: the U.S. Fish & Wildlife Service, the National Oceanic and Atmospheric Administration, and the Connecticut Department of Energy and Environmental Protection. We have also received grants and assistance from: U.S. Department of Agriculture, Natural Resource Conservation Service (USDA, NRCS), First Light Power Resources, Sharon Audubon, Institute of Native American Studies and our neighbor Steve Looney of STL Construction. Without our partners and the diligent work of our NWCD staff, the Native Meadows Preserve could never have become a reality.

Author Curtis Read, long-serving chairman of the Northwest Conservation District, is First Selectman of the Town of Bridgewater.

The Northwest Conservation District
1185 New Litchfield St.
Torrington, CT 06790
Phone (860) 626-7222
www.conservect.org/northwest

Board of Directors:
Curtis S. Read, Bridgewater, Chair
Dick Leavenworth, Woodbury, V. Chair
Sharon Tingley, Sharon, Sec.
Tara Jo Holmberg, Winsted
Ray Furse, Warren
Dan McGuinness, Torrington
Larry Rousseau, Torrington
Bob Rush, New Milford
Rusty Warner, New Hartford

District Staff:
Sean Hayden
Michael Morin
Karen Griswold Nelson
Jean Cronauer
Linda Goldsmith

The Northwest Conservation District (NWCD) is a local environmental non-profit 501c(3) organization. Our mission is to promote the conservation and wise use of natural resources through education and technical assistance service. We support the sustainable use of resources and energy; promote ecosystem, watershed, and open space planning; and advise on the benefits of Low Impact Development (LID) techniques.

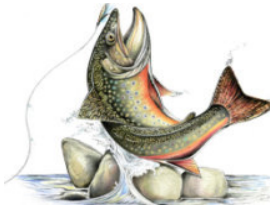
The District serves the towns of Barkhamsted, Bethel, Bethlehem, Bridgewater, Brookfield, Canaan (Falls Village), Colebrook, Cornwall, Danbury, Goshen, Hartland, Harwinton, Kent, Litchfield, Morris, New Fairfield, New Hartford, New Milford, Newtown, Norfolk, North Canaan, Plymouth, Roxbury, Salisbury, Sharon, Sherman, Southbury, Thomaston, Torrington, Warren, Washington, Watertown, Winchester and Woodbury.

NWCD is participating in [Give Local 2017](#). This fun and inspiring 36-hour online giving event, April 25 - April 26, hosted by the Connecticut Community Foundation (CCF), unites donors to local non-profits



that give so much to the communities where we live, work and play. If you are not able to participate in our Earth Day Plant Sale event, consider making an online donation to NWCD at givelocalccf.org. We would also wish to thank CCF for their generous Technology Grant award that is helping us create a completely new website.

2017 Spring Trout Stocking Sale - Adult Rainbow & Brown Trout



Stock your pond with 9-to-11" trout raised in Connecticut and delivered to your pond or stream on April 8th. Trout are rewarding to feed and observe, catch and release, or enjoy as delicious fresh fish. Order deadline is March 30. We will obtain all DEEP liberation permits for you and provide order confirmation. The minimum order of 50 fish is \$325 with a delivery charge of \$50. You can also purchase 25 additional fish for \$150. Delivery times are set by the hatchery. Call 860-626-7222 for more information.

Two Types of LID Treatment Systems Bioretention (aka Rain Gardens) and Bioswales

The following is written by Steven Trinkaus, PE, design professional, long-time LID advocate and District partner, who is working with NWCD as part of a shared initiative funded in part by the Connecticut Community Foundation and the Connecticut Institute for Resilience and Climate Adaptation (CIRCA). This climate resiliency initiative aims to increase awareness of why the change to LID from traditional stormwater management is needed, and how to accomplish it.

Bioretention System:

The most commonly used LID treatment system is a bioretention



cell, commonly referred to as a rain garden. A bioretention system is a depressed landscaped area with a specified soil media that is planted with native grasses, perennials or shrubs. Runoff from the first 1" of rainfall is directed to the bioretention system, and the runoff will temporarily pool in the depression

and then infiltrate into the native soils. Pollutants found in the runoff are reduced by the physical, chemical and biological processes of the soil and plants in the bioretention system. Metals and hydrocarbons in stormwater have an affinity to attach themselves to sediment particles, so if sediment is being trapped in a bioretention system, so are these pollutants. Nutrients, both in soluble and particulate forms, are taken up by the vegetation for growth purposes.

Bioswale System:

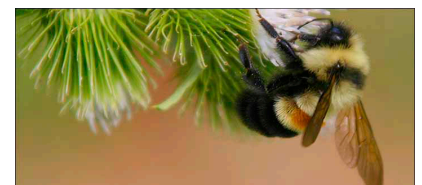
A variation of a bioretention system is the bioswale (aka linear bioretention or dry swale). A bioswale can be used along roadways to convey and filter runoff just like a bioretention cell. A key design step in all types of LID infiltration systems is obtaining a comprehensive



soil evaluation in the area of the proposed system. The types of soil must be identified as well as potential limiting factors such as the depth of groundwater or bedrock. In addition, infiltration testing is required of the soil layers at or below the bottom of the bioretention facility to ensure that a minimum infiltration rate of 1.25 cm/hr (0.5"/hr) is obtained.

LID infiltration systems can be installed in soils with infiltration rates slower than 1.25 cm/hr; however, the design must be modified to address the slower infiltration rate by increasing storage volume or adding an underdrain to the system.

Rusty Patched Bumblebee - *Bombis Affinis*
Follow the plight of this valuable native pollinator as it seeks to receive protection under the US Endangered Species Act.



Northwest Conservation District
1185 New Litchfield Street
Torrington, CT 06790

Non-Profit Org
US Postage Paid



Earth Day Plant Sale Order Form inside

Order by mail or visit our online store at nwcd.org

GO GREEN! For ONLY electronic communications, request at ncd@conservect.org.

2017 SPRING CONSERVATION CALENDAR

March

30 Spring Adult Trout Stocking Order Deadline. See inside for order form and delivery details.

April

7 Plant Order Deadline for our 35th ANNUAL EARTH DAY PLANT SALE

8 NWCD Trout Delivery

21- 23 35th ANNUAL NWCD EARTH DAY PLANT SALE

Goshen Fairgrounds, 116 Old Middle St., Route 63, Goshen.

Earth Day Plant Sale Order Form inside or order online at nwcd.org

EARTH DAY 2017 - April 22. The first Earth Day, in 1970, activated 20 million Americans from all walks of life and by the end of 1970, led to the creation of the Clean Air, Clean Water and Endangered Species Acts. The fight is far from being over when it comes to clean air and clean water for all of our earth's precious creatures. In the words of Margaret Mead, a famed anthropologist and an original Earth Day supporter, "Never doubt that a small group of thoughtfully committed citizens can change the world. Indeed, it's the only thing that ever has."

All of us at the Northwest Conservation District thank you for all that you do!

